

CA/F 5/17

Orig.: en

Munich, 06.10.2017

SUBJECT: Statistics 2016

SUBMITTED BY: President of the European Patent Office

ADDRESSEES: Budget and Finance Committee (for information)

SUMMARY

Annual compendium of statistics on the activity at the EPO and at the member state offices in 2016.

TABLE OF CONTENTS

Subject	Page
I. STRATEGIC/OPERATIONAL	1
II. RECOMMENDATION	1
III. MAJORITY NEEDED	1
IV. CONTEXT	1
V. RECOMMENDATION FOR PUBLICATION	1
VI. ANALYSIS	1
A. KEY RESULTS	1
B. EUROPEAN PATENT APPLICATIONS FILED	2
C. GRANT PROCEDURE	2
D. OPPOSITION PROCEDURE	3
E. APPEAL PROCEDURES	3
F. VALIDATION AND MAINTENANCE	4
G. NATIONAL PROCEDURE	4
ANNEX 1 EUROPEAN PATENT PROCEDURES STATISTICS	6
A. EUROPEAN PATENT APPLICATIONS FILED	6
a) Filing route in 2016	6
b) Origin and growth over 2015 (%)	7
c) First filings at the EPO	8
B. EUROPEAN PROCEDURES	9
a) Grant procedure	9
b) Opposition procedure	11
c) Appeal procedures	14
d) Processing times	16
C. PUBLICATIONS	17

D.	VALIDATION AND MAINTENANCE OF EUROPEAN PATENTS	18
a)	Albania	20
b)	Austria	21
c)	Belgium	22
d)	Bulgaria	23
e)	Switzerland/Liechtenstein	24
f)	Cyprus	25
g)	Czech Republic	26
h)	Germany	27
i)	Denmark	28
j)	Estonia	29
k)	Spain	30
l)	Finland	31
m)	France	32
n)	United Kingdom	33
o)	Greece	34
p)	Croatia	35
q)	Hungary	36
r)	Ireland	37
s)	Iceland	38
t)	Italy	39
u)	Lithuania	40
v)	Luxembourg	41
w)	Latvia	42
x)	Monaco	43
y)	F Y R of Macedonia	44
z)	Malta	45
aa)	Netherlands	46
bb)	Norway	47
cc)	Poland	48
dd)	Portugal	49
ee)	Romania	50
ff)	Serbia	51
gg)	Sweden	52
hh)	Slovenia	53
ii)	Slovakia	54
jj)	San Marino	55
kk)	Turkey	56

ANNEX 2	NATIONAL STATISTICS	57
A.	NATIONAL PATENT APPLICATIONS	57
a)	Filing route and growth over 2015 (not adjusted for missing data)	57
b)	Origin of foreign applications	58
c)	First filings	59
B.	GRANT PROCEDURE	60
C.	WORKING AGREEMENTS EPO-NPO ON SEARCH	61
a)	Ex-IIIB states	61
b)	Other states	61
ANNEX 3	THE EUROPEAN PATENT PROCEDURE IN 2016	62
ANNEX 4	THE PCT INTERNATIONAL PHASE AND THE EPO IN 2016	63
ANNEX 5	GLOSSARY	64

I. STRATEGIC/OPERATIONAL

1. Operational

II. RECOMMENDATION

2. To take note

III. MAJORITY NEEDED

3. n.a.

IV. CONTEXT

4. Information to the BFC

V. RECOMMENDATION FOR PUBLICATION

5. Yes.

As its previous versions, this document has been compiled with the support of the National Offices of the Contracting states. Following the decision taken in 2015, CA/F 5/15 and CA/F 5/16 editions of the document have been published. It is recommended to publish the current version as well.

VI. ANALYSIS

In the different phases of the patent procedures, the development is expressed in percentage change compared to the previous year. Where appropriate, numbers have been rounded.

A. KEY RESULTS

The key results for 2016 are:

- Consolidation of the number of applications to ca 159 300
- 6.7% increase in European filings to 297 600
- 95 940 published European patents (+40%)

- 1.3% increase in national applications in the member states to 155 300
- Stabilisation of the number of national patents granted in the member states
- 65% of all applications filed in the EPC area (EPO and National Offices) originated from the member states.

B. EUROPEAN PATENT APPLICATIONS FILED

See Annex 1.A

Based on the information available in June 2017, some 159 340 applications were filed for European patents in 2016. This was 0.4% below the 2015 figure.

Slightly less than half of the applications (47.7%, +0.1% pts) originated from the EPC Contracting States. The combined share of the three leading Asian countries (22%) grew by 1% pts. The share of the U.S. (25.1%) declined by 1.5% pts after increasing 2.6% pts in 2015 due to the surge in PCT applications following the introduction of the First-Inventor-to-File of the A.I.A. in the U.S. in 2013.

In 2016, EPC residents filed about 135 000 first filings in the EPC area (at EPO and at National Offices). Of these 80% were filed at the national office of the applicant's residence, 16% where filed at the EPO and 4% were filed at another EPC national office.

The first filings made by EPC residents at the EPO accounted for 28% of all the applications filed by EPC residents at the EPO.

The number of international PCT applications filed increased further markedly by 7.2% in 2016. Together with the Euro-direct applications, this led to a total of ca 297 570 European patent filings (+6.7%).

C. GRANT PROCEDURE

See Annex 1.B.a

The grant procedure has been completed for 94% of all applications for a European patent filed up until the end of 2011. For these applications the grant rate was 56%. Of those applications filed since the beginning of 2012, 33.9% of the procedures have been completed.

The number of published granted patents increased by 40.2% to 95 940 in 2016 (see Annex 1.C).

On average, the examination was completed 23.3 months (median) after the examination was validly filed with the EPO (23.5 in 2015, median) (See annex 1.B.d)

On average the patents were granted within 45.2 months in 2016 (43.2 in 2015) and 39% were granted within 3 years (37.3% in 2015) from filing at the EPO to publication of the patent.

D. OPPOSITION PROCEDURE

See Annex 1.B.b

The number of patents for which the opposition period expired in 2016 increased to 73 738 by 13% and 4.0% of these patents were eventually opposed. Considering that multiple parties can oppose the same patent, the average number of oppositions filed per opposed patent was 1.24 in 2016 (4.5% and 1.24 respectively in 2015).

As shown in the annexed tables, the opposition rate varies among technologies and according to the country of residence of the patentees.

In 2016, 72% of the granted patents were maintained (as granted or in amended form) and 28% were initially revoked by the opposition divisions (30% in 2015).

E. APPEAL PROCEDURES

See Annex 1.B.c

The number of decisions to refuse a patent for which the appeal period expired in 2016 increased by 18.4% compared to 2015 to 5 464. Of these 990 (+10%) were appealed, leading to a slight decrease of the ex-parte appeal rate to 18% (20% in 2015).

The number of opposition decisions open for appeal increased by 10% to 3 955. The number of decisions appealed decreased by 1% to 1 737, leading to a decline of the inter-partes appeal rate to 44% (49% in 2015).

F. VALIDATION AND MAINTENANCE

See Annex 1.D

The figures presented in the annexes are based on the data available in the Post Grant Data System of the EPO and reflect the information provided by the national offices of the member states. They represent the situation as at the end of 2016 with respect to the validation and the maintenance of European granted patents in the member states as available in June 2017.

The EP patents validated are maintained on average up to 11 years (median). About 21% of the validated rights are maintained up until the expiration of the 20th patent-year.

As a consequence of the increase in granted patents in 2015, the number of those which were validated in 2016 increased. The number of patents granted by the EPO and still in force in the Contracting States at the end of the year increased by 18% in 2016. Approximately 4.94 million patent rights granted by the EPO were in force at the end of 2016.

There are substantial differences between the designated member states.

G. NATIONAL PROCEDURE

See Annex 2

Based on the data provided by the National Offices by August 2017 and on estimations for 2 member states, it is estimated that 155 300 applications for a national patent were filed in the member states in 2016. This represented an adjusted increase of 1.3% compared to 2015.

About 76% were filed by residents of the respective countries (71% in 2015), and 31% of the foreign applications were filed by residents of other EPC Contracting States. Together 83% of the national patent applications in the EPC states were filed by residents of the EPC states (78% in 2015).

In 2016, overall 93.6% of the national applications filed by residents of the EPC member states at their home office were first filings.

Estimating missing data, it is calculated that about 134 000 national grant procedures were completed in 2016. Of these, 60 720 resulted in a granted patent. This would be comparable to the number of patents granted by the National Offices in 2015.

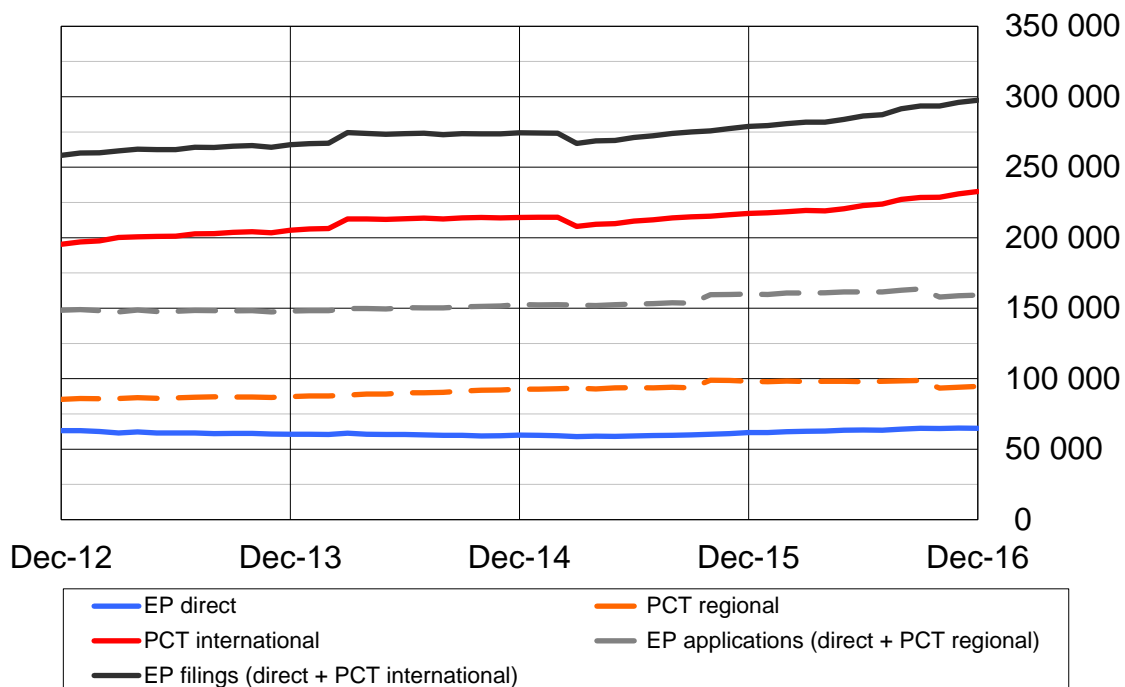
ANNEX 1 EUROPEAN PATENT PROCEDURES STATISTICS

A. EUROPEAN PATENT APPLICATIONS FILED

a) Filing route in 2016

Category	Budget 2016	Previous year 2015 Status June 2017	Actual 2016 Status June 2017	Deviation to budget		Deviation to previous year	
				Number	%	Number	%
Euro-direct	59 400	61 770	64 739	5 339	9.0%	2 969	4.8%
PCT international	223 400	217 233	232 832	9 432	4.2%	15 599	7.2%
Total filings	282 800	279 003	297 571	14 771	5.2%	18 568	6.7%
PCT regional	95 806	98 228	94 597	-1 209	-1.3%	-3 631	-3.7%
Total applications	155 206	159 998	159 336	4 130	2.7%	- 662	-0.4%

12 Months Moving Total



b) Origin and growth over 2015 (%)

Country of origin		EP direct ¹		PCT international ²		EP filings		PCT regional ¹		EP applications	
Albania	AL	1		0	-100.0%	1	0.0%	1		2	
Austria	AT	1 125	2.7%	1 422	2.5%	2 547	2.6%	920	2.4%	2 045	2.6%
Belgium	BE	1 357	12.2%	1 218	1.8%	2 575	7.1%	833	-2.0%	2 190	6.4%
Bulgaria	BG	12	-14.3%	63	21.2%	75	13.6%	8	-57.9%	20	-39.4%
Switzerland	CH	4 260	5.1%	4 364	6.4%	8 624	5.8%	2 995	-0.6%	7 255	2.7%
Cyprus	CY	24	26.3%	37	-19.6%	61	-6.2%	23	21.1%	47	23.7%
Czech Republic	CZ	100	-3.8%	199	5.3%	299	2.0%	89	-17.6%	189	-10.8%
Germany	DE	13 710	2.6%	18 305	1.8%	32 015	2.2%	11 361	-0.6%	25 071	1.2%
Denmark	DK	1 007	-1.6%	1 354	4.2%	2 361	1.7%	862	-3.9%	1 869	-2.7%
Estonia	EE	25	19%	24	-27.3%	49	-9.3%	19	72.7%	44	37.5%
Spain	ES	879	3.9%	1 505	-11.7%	2 384	-6.5%	682	1.5%	1 561	2.8%
Finland	FI	681	-4.2%	1 524	-15.8%	2 205	-12.6%	1 136	-11.3%	1 817	-8.7%
France	FR	4 516	-7.2%	8 188	-0.9%	12 704	-3.2%	5 993	1.9%	10 509	-2.2%
United Kingdom	GB	1 809	-2.1%	5 492	4.2%	7 301	2.6%	3 331	2.2%	5 140	0.6%
Greece	GR	28	-22.2%	111	-16.5%	139	-17.8%	45	-18.2%	73	-19.8%
Croatia	HR	3	50.0%	39	-27.8%	42	-25.0%	11	57.1%	14	55.6%
Hungary	HU	33	37.5%	178	12.7%	211	15.9%	77	4.1%	110	12.2%
Ireland	IE	372	29.2%	439	0.2%	811	11.7%	306	-6.7%	678	10.1%
Iceland	IS	6	-50.0%	56	30.2%	62	12.7%	33	-8.3%	39	-18.8%
Italy	IT	1 989	3.7%	3 363	10.0%	5 352	7.6%	2 181	5.6%	4 170	4.7%
Liechtenstein	LI	200	-1.0%	249	7.8%	449	3.7%	177	5.4%	377	1.9%
Lithuania	LT	9	-57.1%	28	-48.1%	37	-50.7%	18	0.0%	27	-30.8%
Luxembourg	LU	225	19.7%	431	10.5%	656	13.5%	256	7.1%	481	12.6%
Latvia	LV	4	-81.0%	23	-20.7%	27	-46.0%	8	-11.1%	12	-60.0%
Monaco	MC	16	23.1%	13	-60.6%	29	-37.0%	20	25.0%	36	24.1%
F Y R of Macedonia	MK	1		3	-25.0%	4	0.0%	0		1	
Malta	MT	46	4.5%	87	50.0%	133	30.4%	44	-13.7%	90	-5.3%
Netherlands	NL	3 771	-9.8%	4 676	11.2%	8 447	0.7%	3 073	3.7%	6 844	-4.2%
Norway	NO	159	27.2%	654	-4.8%	813	0.1%	369	-3.9%	528	3.7%
Poland	PL	252	-40.1%	343	-1.4%	595	-22.6%	161	12.6%	413	-26.8%
Portugal	PT	57	18.8%	184	15.7%	241	16.4%	101	7.4%	158	11.3%
Romania	RO	16	-20.0%	44	57.1%	60	25.0%	14	40.0%	30	0.0%
Serbia	RS	0		15	7.1%	15	7.1%	1	-75.0%	1	-75.0%
Sweden	SE	1 154	1.7%	3 720	-4.9%	4 874	-3.4%	2 400	-11.2%	3 554	-7.4%
Slovenia	SI	54	-3.6%	69	-55.8%	123	-42.0%	60	-3.2%	114	-3.4%
Slovakia	SK	29	26.1%	55	-15.4%	84	-4.5%	14	-44.0%	43	-10.4%
San Marino	SM	5	66.7%	8	300.0%	13	160.0%	5		10	233.3%
Turkey	TR	191	20.9%	1 068	25.2%	1 259	24.5%	320	11.5%	511	14.8%
EPC contracting states		38 126	0.0%	59 551	1.9%	97 677	1.2%	37 947	-0.3%	76 073	-0.1%
P.R. China	CN	1 692	57.8%	43 128	68.8%	44 820	68.4%	5 463	17.3%	7 155	24.9%
Japan	JP	6 439	0.7%	45 221	6.7%	51 660	5.9%	14 570	-3.1%	21 009	-2.0%
Republic of Korea	KR	3 224	-9.4%	15 554	18.6%	18 778	12.6%	3 599	26.5%	6 823	6.5%
United States of America	US	12 118	21.5%	56 535	-8.0%	68 653	-3.9%	27 920	-14.4%	40 038	-6.0%
Other countries		3 140	17.9%	12 843	-21.0%	15 983	-15.5%	5 098	1.8%	8 238	7.4%
Non EPC		26 613	12.5%	173 281	9.1%	199 894	9.6%	56 650	-5.8%	83 263	-0.7%
TOTAL		64 739	4.8%	232 832	7.2%	297 571	6.7%	94 597	-3.7%	159 336	-0.4%

(1) 2016 Euro-direct and PCT regional - EPASYS status June 2017

(2) 2016 PCT international phase as reported by WIPO - status June 2017

c) First filings at the EPO

Number of Euro-direct first filings and percentage out of total applications filed, and change of this percentage to the latest 2015 figures.

Country of origin		2016		2016 / 2015
Albania	AL	1	50.0%	
Austria	AT	604	29.5%	10.2%
Belgium	BE	953	43.5%	8.7%
Bulgaria	BG	6	30.0%	-33.3%
Switzerland	CH	3 255	44.9%	2.4%
Cyprus	CY	9	19.1%	350.0%
Czech Republic	CZ	37	19.6%	-7.5%
Germany	DE	6 799	27.1%	5.8%
Denmark	DK	775	41.5%	-0.5%
Estonia	EE	9	20.5%	-10.0%
Spain	ES	640	41.0%	3.6%
Finland	FI	407	22.4%	5.7%
France	FR	2 064	19.6%	-13.2%
United Kingdom	GB	674	13.1%	-3.4%
Greece	GR	13	17.8%	44.4%
Croatia	HR	2	14.3%	100.0%
Hungary	HU	20	18.2%	53.8%
Ireland	IE	197	29.1%	26.3%
Iceland	IS	4	10.3%	-20.0%
Italy	IT	470	11.3%	0.9%
Liechtenstein	LI	182	48.3%	-4.7%
Lithuania	LT	1	3.7%	-80.0%
Luxembourg	LU	118	24.5%	7.3%
Latvia	LV	4	33.3%	-81.0%
Monaco	MC	3	8.3%	200.0%
F Y R of Macedonia	MK	1	100.0%	
Malta	MT	41	45.6%	17.1%
Netherlands	NL	3 041	44.4%	-12.5%
Norway	NO	85	16.1%	28.8%
Poland	PL	137	33.2%	-32.8%
Portugal	PT	16	10.1%	-11.1%
Romania	RO	8	26.7%	-33.3%
Serbia	RS	0	-	
Sweden	SE	810	22.8%	6.4%
Slovenia	SI	14	12.3%	-48.1%
Slovakia	SK	12	27.9%	100.0%
San Marino	SM	1	10.0%	
Turkey	TR	92	18.0%	27.8%
EPC states		21 505	28.3%	-0.5%
P.R. China	CN	127	1.8%	18.7%
Japan	JP	342	1.6%	28.1%
Rep. Korea	KR	66	1.0%	120.0%
United States of America	US	1 191	3.0%	21.4%
Other countries		418	5.1%	-0.9%
Non EPC		2 144	2.6%	18.6%
TOTAL		23 649	14.8%	1.0%

B. EUROPEAN PROCEDURES

a) Grant procedure

Fate of 100 applications filed from 1978 to 2011.

Procedural phase		Euro-direct applications	PCT regional phase	Total
Before examination	Refused	0	0	0
	Withdrawn	19	8	14
Forwarded for examination		81	92	85
Examination	Refused	3	3	3
	Withdrawn	22	33	26
	Granted	56	56	56
Total		100	100	100

Fate of 100 PCT international filings 1978-2011

Not pursued in the EPO regional phase		43
Entered the European procedure		57
Before examination	Refused	0
	Withdrawn	5
Forwarded for examination		53
Examination	Refused	2
	Withdrawn	19
	Granted	32
Total		100

Fate of applications filed from 2012 to 2016

Euro-direct		2012	2013	2014	2015	2016
Applications filed		63 166 100.0%	60 657 100.0%	60 047 100.0%	61 770 100.0%	64 739 100.0%
Before examination	Refused	479 0.8%	480 0.8%	266 0.4%	162 0.3%	38 0.1%
	Withdrawn	18 187 28.8%	17 947 29.6%	18 620 31.0%	13 031 21.1%	3 712 5.7%
	Not yet forwarded for examination:					
	Search completed	43 0.1%	37 0.1%	81 0.1%	2 459 4.0%	0 0.0%
	Search not completed	2 988 4.7%	4 357 7.2%	1 027 1.7%	7 792 12.6%	44 666 69.0%
Examination	Forwarded	41 469 65.7%	37 836 62.4%	40 053 66.7%	38 326 62.0%	16 323 25.2%
	Refused	590 0.9%	335 0.6%	115 0.2%	9 0.0%	0 0.0%
	Withdrawn	5 900 9.3%	3 557 5.9%	1 894 3.2%	412 0.7%	12 0.0%
	Granted	17 267 27.3%	12 121 20.0%	7 566 12.6%	1 800 2.9%	2 0.0%
	Examination not yet completed:	17 712 28.0%	21 823 36.0%	30 478 50.8%	36 105 58.5%	16 309 25.2%

PCT with supplementary search		2012	2013	2014	2015	2016
Applications filed		39 987 100.0%	40 694 100.0%	43 767 100.0%	46 887 100.0%	44 914 100.0%
Before examination	Refused	12 0.0%	12 0.0%	15 0.0%	3 0.0%	3 0.0%
	Withdrawn	8 233 20.6%	6 362 15.6%	5 637 12.9%	3 237 6.9%	507 1.1%
	Not yet forwarded for examination:					
	Search completed	23 0.1%	17 0.0%	23 0.1%	3 0.0%	0 0.0%
	Search not completed	5 123 12.8%	6 488 15.9%	438 1.0%	7 827 16.7%	37 565 83.6%
Examination	Forwarded	26 596 66.5%	27 815 68.4%	37 654 86.0%	35 817 76.4%	6 839 15.2%
	Refused	314 0.8%	169 0.4%	76 0.2%	8 0.0%	0 0.0%
	Withdrawn	3 766 9.4%	2 615 6.4%	1 759 4.0%	265 0.6%	37 0.1%
	Granted	7 966 19.9%	6 146 15.1%	4 261 9.7%	910 1.9%	97 0.2%
	Examination not yet completed:	14 550 36.4%	18 885 46.4%	31 558 72.1%	34 634 73.9%	6 705 14.9%

PCT without supplementary search		2012	2013	2014	2015	2016
Applications filed		45 390 100.0%	46 657 100.0%	48 868 100.0%	51 339 100.0%	49 684 100.0%
Before examination	Refused	1 0.0%	0 0.0%	0 0.0%	0 0.0%	1 0.0%
	Withdrawn	77 0.2%	66 0.1%	44 0.1%	63 0.1%	49 0.1%
	Not yet forwarded for examination:					
	Search completed	7 0.0%	5 0.0%	6 0.0%	6 0.0%	24 0.0%
	Search not completed	0 0.0%	0 0.0%	0 0.0%	0 0.0%	0 0.0%
Examination	Forwarded	45 305 99.8%	46 586 99.8%	48 818 99.9%	51 270 99.9%	49 610 99.9%
	Refused	436 1.0%	247 0.5%	115 0.2%	21 0.0%	2 0.0%
	Withdrawn	9 700 21.4%	7 481 16.0%	5 175 10.6%	2 749 5.4%	539 1.1%
	Granted	19 634 43.3%	17 465 37.4%	13 056 26.7%	6 074 11.8%	359 0.7%
	Examination not yet completed:	15 535 34.2%	21 393 45.9%	30 472 62.4%	42 426 82.6%	48 710 98.0%

Total applications		2012	2013	2014	2015	2016
Applications filed		148 543 100.0%	148 008 100.0%	152 682 100.0%	159 998 100.0%	159 336 100.0%
Before examination	Refused	492 0.3%	492 0.3%	281 0.2%	165 0.1%	42 0.0%
	Withdrawn	26 497 17.8%	24 375 16.5%	24 301 15.9%	16 331 10.2%	4 268 2.7%
	Not yet forwarded for examination:					
	Search completed	73 0.0%	59 0.0%	110 0.1%	2 468 1.5%	24 0.0%
	Search not completed	8 111 5.5%	10 845 7.3%	1 465 1.0%	15 619 9.8%	82 231 51.6%
Examination	Forwarded	113 370 76.3%	112 237 75.8%	126 525 82.9%	125 415 78.4%	72 771 45.7%
	Refused	1 340 0.9%	751 0.5%	306 0.2%	38 0.0%	2 0.0%
	Withdrawn	19 366 13.0%	13 653 9.2%	8 828 5.8%	3 426 2.1%	588 0.4%
	Granted	44 867 30.2%	35 732 24.1%	24 883 16.3%	8 784 5.5%	458 0.3%
	Examination not yet completed:	47 797 32.2%	62 101 42.0%	92 508 60.6%	113 167 70.7%	71 723 45.0%

b) Opposition procedure

Opposition rate and oppositions field

Technology	Patents which could be opposed	Opposed patents	Oppositions filed	Opposition rate	Opposition ratio
Electrical engineering	17 389	227	258	1.3%	1.14
Electrical machinery, apparatus, energy	5 019	123	137	2.5%	1.11
Audio-visual technology	1 595	25	31	1.6%	1.24
Telecommunications	1 988	7	8	0.4%	1.14
Digital communication	4 385	36	41	0.8%	1.14
Basic communication processes	522	4	4	0.8%	1.00
Computer technology	2 613	18	22	0.7%	1.22
IT methods for management	55	1	1	1.8%	1.00
Semiconductors	1 212	13	14	1.1%	1.08
Instruments	13 005	436	501	3.4%	1.15
Optics	1 632	15	21	0.9%	1.40
Measurement	3 361	78	85	2.3%	1.09
Analysis of biological materials	652	22	30	3.4%	1.36
Control	819	38	43	4.6%	1.13
Medical technology	6 541	283	322	4.3%	1.14
Chemistry	17 982	1 124	1 585	6.3%	1.41
Organic fine chemistry	3 534	161	219	4.6%	1.36
Biotechnology	2 685	138	232	5.1%	1.68
Pharmaceuticals	2 376	174	322	7.3%	1.85
Macromolecular chemistry, polymers	1 678	143	179	8.5%	1.25
Food chemistry	722	86	113	11.9%	1.31
Basic materials chemistry	1 857	154	203	8.3%	1.32
Materials, metallurgy	1 283	100	118	7.8%	1.18
Surface technology, coating	1 035	55	75	5.3%	1.36
Micro-structural and nano-technology	107	1	1	0.9%	1.00
Chemical engineering	1 697	86	92	5.1%	1.07
Environmental technology	1 008	26	31	2.6%	1.19
Mechanical engineering	19 482	895	1 021	4.6%	1.14
Handling	2 498	121	135	4.8%	1.12
Machine tools	2 125	112	141	5.3%	1.26
Engines, pumps, turbines	3 155	135	145	4.3%	1.07
Textile and paper machines	1 507	96	124	6.4%	1.29
Other special machines	2 640	168	192	6.4%	1.14
Thermal processes and apparatus	1 197	56	60	4.7%	1.07
Mechanical elements	2 064	77	85	3.7%	1.10
Transport	4 296	130	139	3.0%	1.07
Other fields	5 874	256	292	4.4%	1.14
Furniture, games	1 708	70	75	4.1%	1.07
Other consumer goods	1 675	94	110	5.6%	1.17
Civil engineering	2 491	92	107	3.7%	1.16
Not classified	6	0	0	0.0%	-
Total	73 738	2 938	3 657	4.0%	1.24

Country of residence of the patent proprietor	Patents which could be opposed	Opposed patents	Oppositions filed	Opposition rate	Opposition ratio
AL Albania	0	0	0	-	-
AT Austria	1 104	69	83	6.3%	1.20
BE Belgium	955	45	52	4.7%	1.16
BG Bulgaria	8	0	0	0.0%	-
CH Switzerland	3 154	196	260	6.2%	1.33
CY Cyprus	18	1	2	5.6%	2.00
CZ Czech Republic	81	8	8	9.9%	1.00
DE Germany	14 963	872	1 035	5.8%	1.19
DK Denmark	773	60	78	7.8%	1.30
EE Estonia	9	0	0	0.0%	-
ES Spain	565	21	26	3.7%	1.24
FI Finland	815	39	53	4.8%	1.36
FR France	5 755	180	208	3.1%	1.16
GB United Kingdom	2 363	115	133	4.9%	1.16
GR Ellas	23	3	3	13.0%	1.00
HR Croatia	5	0	0	0.0%	-
HU Hungary	40	0	0	0.0%	-
IE Ireland	271	17	19	6.3%	1.12
IS Iceland	23	0	0	0.0%	-
IT Italy	2 607	94	103	3.6%	1.10
LI Liechtenstein	114	7	8	6.1%	1.14
LT Lithuania	10	0	0	0.0%	-
LU Luxembourg	245	14	26	5.7%	1.86
LV Latvia	12	0	0	0.0%	-
MC Monaco	9	1	1	11.1%	1.00
MK FYRO Macedonia	0	0	0	-	-
MT Malta	25	1	1	4.0%	1.00
NL Netherlands	2 134	104	141	4.9%	1.36
NO Norway	265	12	16	4.5%	1.33
PL Poland	157	7	8	4.5%	1.14
PT Portugal	51	0	0	0.0%	-
RO Romania	14	0	0	0.0%	-
RS Serbia	1	0	0	0.0%	-
SE Sweden	2 071	57	75	2.8%	1.32
SI Slovenia	66	4	5	6.1%	1.25
SK Slovakia	11	0	0	0.0%	-
SM San Marino	6	0	0	0.0%	-
TR Turkey	229	4	11	1.7%	2.75
EPC states	38 952	1 931	2 355	5.0%	1.22
CN P.R. China	1 662	21	22	1.3%	1.05
JP Japan	11 365	208	244	1.8%	1.17
KR Rep. Korea	2 181	31	34	1.4%	1.10
US United States of America	16 402	669	905	4.1%	1.35
Other	3 176	78	97	2.5%	1.24
Total	73 738	2 938	3 657	4.0%	1.24

Outcome of the opposition procedures completed in 2016 (examiner decisions)

Technology	Opposition rejected		Patent revoked		Patent amended		Total	
Electrical engineering	126	30%	138	33%	159	38%	423	100%
Electrical machinery, apparatus, energy	38	30%	41	33%	47	37%	126	100%
Audio-visual technology	19	26%	30	42%	23	32%	72	100%
Telecommunications	16	36%	16	36%	12	27%	44	100%
Digital communication	39	36%	27	25%	42	39%	108	100%
Basic communication processes	1	50%	0	0%	1	50%	2	100%
Computer technology	9	23%	13	33%	18	45%	40	100%
IT methods for management	1	50%	1	50%	0	0%	2	100%
Semiconductors	3	10%	10	34%	16	55%	29	100%
Instruments	162	31%	129	25%	224	43%	515	100%
Optics	14	52%	5	19%	8	30%	27	100%
Measurement	36	36%	21	21%	42	42%	99	100%
Analysis of biological materials	6	24%	6	24%	13	52%	25	100%
Control	20	26%	34	44%	23	30%	77	100%
Medical technology	86	30%	63	22%	138	48%	287	100%
Chemistry	440	30%	466	31%	576	39%	1 482	100%
Organic fine chemistry	61	34%	59	33%	60	33%	180	100%
Biotechnology	29	17%	49	29%	93	54%	171	100%
Pharmaceuticals	56	26%	89	41%	73	33%	218	100%
Macromolecular chemistry, polymers	56	29%	73	38%	65	34%	194	100%
Food chemistry	30	27%	43	38%	40	35%	113	100%
Basic materials chemistry	64	33%	52	27%	79	41%	195	100%
Materials, metallurgy	47	41%	17	15%	50	44%	114	100%
Surface technology, coating	37	34%	25	23%	48	44%	110	100%
Micro-structural and nano-technology	1	100%	0	0%	0	-	1	-
Chemical engineering	41	33%	39	31%	45	36%	125	100%
Environmental technology	18	30%	20	33%	23	38%	61	100%
Mechanical engineering	431	36%	298	25%	464	39%	1 193	100%
Handling	53	37%	36	25%	55	38%	144	100%
Machine tools	44	34%	32	25%	53	41%	129	100%
Engines, pumps, turbines	51	35%	36	25%	59	40%	146	100%
Textile and paper machines	56	36%	37	24%	63	40%	156	100%
Other special machines	78	37%	53	25%	81	38%	212	100%
Thermal processes and apparatus	24	57%	10	24%	8	19%	42	100%
Mechanical elements	34	30%	34	30%	45	40%	113	100%
Transport	91	36%	60	24%	100	40%	251	100%
Other fields	131	38%	88	26%	123	36%	342	100%
Furniture, games	29	39%	23	31%	22	30%	74	100%
Other consumer goods	49	36%	35	26%	51	38%	135	100%
Civil engineering	53	40%	30	23%	50	38%	133	100%
Total	1 290	33%	1 119	28%	1 546	39%	3 955	100%

Status: as of June 2017

c) Appeal procedures

Refusals by the examining divisions and appeals in 2016

Technology	Decisions to refuse	Appealed decisions	
Electrical engineering	3 211	520	16%
Electrical machinery, apparatus, energy	123	25	20%
Audio-visual technology	642	85	13%
Telecommunications	233	27	12%
Digital communication	327	43	13%
Basic communication processes	70	17	24%
Computer technology	1205	215	18%
IT methods for management	482	79	16%
Semiconductors	129	29	22%
Instruments	799	162	20%
Optics	115	19	17%
Measurement	218	46	21%
Analysis of biological materials	38	8	21%
Control	218	42	19%
Medical technology	210	47	22%
Chemistry	1029	209	20%
Organic fine chemistry	169	25	15%
Biotechnology	156	38	24%
Pharmaceuticals	207	44	21%
Macromolecular chemistry, polymers	39	4	10%
Food chemistry	48	8	17%
Basic materials chemistry	141	26	18%
Materials, metallurgy	65	14	22%
Surface technology, coating	39	10	26%
Micro-structural and nano-technology	7	0	0%
Chemical engineering	98	26	27%
Environmental technology	60	14	23%
Mechanical engineering	299	71	24%
Handling	39	12	31%
Machine tools	25	5	20%
Engines, pumps, turbines	42	10	24%
Textile and paper machines	19	8	42%
Other special machines	54	10	19%
Thermal processes and apparatus	40	6	15%
Mechanical elements	37	8	22%
Transport	43	12	28%
Other fields	123	27	22%
Furniture, games	51	8	16%
Other consumer goods	33	5	15%
Civil engineering	39	14	36%
Unclassified	3	1	33%
Total	5 464	990	18%

Outcome of the technical appeal against decisions to refuse a patent (ex parte) in 2016

Technical field	Appeal rejected		Appeal (partially) allowed		Settled otherwise		Total	
Chemistry	40	19%	52	25%	117	56%	209	100%
Electricity	120	26%	56	12%	288	62%	464	100%
Physics	47	26%	44	25%	87	49%	178	100%
Mechanics	33	27%	47	38%	44	35%	124	100%
Total	240	25%	199	20%	536	55%	975	100%

Decisions by the opposition divisions and appeals in 2016

Type of decision	Total cases	Appealed cases	
Opposition rejected	1 290	459	36%
Patent revoked	1 119	423	38%
Patent amended	1 546	855	55%
Total	3 955	1 737	44%

Outcome of the technical appeal against opposition decisions (inter partes) in 2016

Technical field	Appeal rejected		Appeal (partially) allowed		Settled otherwise		Total	
Chemistry	129	25%	213	41%	172	33%	514	100%
Electricity	38	31%	40	33%	43	36%	121	100%
Physics	11	17%	23	35%	31	48%	65	100%
Mechanics	138	25%	212	38%	204	37%	554	100%
Total	316	25%	488	39%	450	36%	1 254	100%

d) Processing times

Early Certainty

The statistics on processing times describe the progress towards the early Certainty objectives for the European patent procedures.

The times indicated in the table below represent the median delays in months for the European search, the substantive examination and the opposition procedures. The delays are measured:

- European Search: from date of receipt at the EPO to end of search
- All searches: from date of receipt at the EPO to date of dispatch of the search report
- Examination: from valid request for examination (all formalities completed) to dispatch of the examiner's intention to grant.
- Opposition: from expiry of the opposition filing period to the date of the opposition decision.

The times are calculated for the applications for which the corresponding stage ended in the reporting year.

Procedure	2016	2015
European Search	8.4	9.3
<i>All searches (incl. Nat. and PCT)</i>	<i>5.1</i>	<i>5.5</i>
Examination	23.3	23.5
Opposition	24.8	26.1

C. PUBLICATIONS

Technology	Applications		Examination requests		Granted patents	
Electrical engineering	43 111	29%	40 897	29%	22 875	24%
Electrical machinery, apparatus, energy	9 435	6.3%	8 777	6.3%	6 705	7.0%
Audio-visual technology	3 847	2.6%	3 597	2.6%	2 128	2.2%
Telecommunications	3 456	2.3%	3 324	2.4%	2 714	2.8%
Digital communication	10 451	7.0%	10 115	7.2%	5 740	6.0%
Basic communication processes	996	0.7%	904	0.6%	574	0.6%
Computer technology	10 393	7.0%	9 931	7.1%	3 384	3.5%
IT methods for management	2 002	1.3%	1 785	1.3%	105	0.1%
Semiconductors	2 531	1.7%	2 464	1.8%	1 525	1.6%
Instruments	25 604	17.2%	23 885	17.1%	16 427	17.1%
Optics	3 219	2.2%	3 023	2.2%	2 059	2.1%
Measurement	7 106	4.8%	6 700	4.8%	4 158	4.3%
Analysis of biological materials	1 079	1%	998	1%	701	1%
Control	2 428	1.6%	2 188	1.6%	1 094	1.1%
Medical technology	11 772	7.9%	10 976	7.9%	8 415	8.8%
Chemistry	33 907	22.8%	31 668	22.7%	23 353	24.3%
Organic fine chemistry	5 138	3.5%	4 841	3.5%	4 371	4.6%
Biotechnology	4 703	3.2%	4 294	3.1%	3 108	3.2%
Pharmaceuticals	5 286	3.5%	4 960	3.6%	3 088	3.2%
Macromolecular chemistry, polymers	2 969	2.0%	2 808	2.0%	2 331	2.4%
Food chemistry	1 284	0.9%	1 210	0.9%	926	1.0%
Basic materials chemistry	3 714	2%	3 397	2%	2 554	3%
Materials, metallurgy	3 104	2.1%	2 984	2.1%	1 907	2.0%
Surface technology, coating	2 342	1.6%	2 183	1.6%	1 392	1.5%
Micro-structural and nano-technology	158	0.1%	157	0.1%	174	0.2%
Chemical engineering	3 465	2.3%	3 222	2.3%	2 170	2.3%
Environmental technology	1 744	1.2%	1 612	1.2%	1 332	1.4%
Mechanical engineering	35 655	24%	32 994	24%	25 368	26%
Handling	3 851	2.6%	3 511	2.5%	3 296	3.4%
Machine tools	3 435	2.3%	3 192	2.3%	2 608	2.7%
Engines, pumps, turbines	6 492	4.4%	5 797	4.2%	4 073	4.2%
Textile and paper machines	2 164	1.5%	1 959	1.4%	1 776	1.9%
Other special machines	5 060	3.4%	4 788	3.4%	3 561	3.7%
Thermal processes and apparatus	2 457	1.6%	2 351	1.7%	1 774	1.8%
Mechanical elements	3 990	2.7%	3 724	2.7%	2 505	2.6%
Transport	8 206	6%	7 672	5%	5 775	6%
Other fields	10 576	7.1%	10 019	7.2%	7 901	8.2%
Furniture, games	2 874	1.9%	2 730	2.0%	2 135	2.2%
Other consumer goods	3 233	2.2%	3 024	2.2%	2 450	2.6%
Civil engineering	4 469	3.0%	4 265	3.1%	3 316	3.5%
Unclassified	72	0.0%	67	0.0%	16	0.0%
Total	148 925	100.0%	139 530	100.0%	95 940	100.0%

D. VALIDATION AND MAINTENANCE OF EUROPEAN PATENTS

In the following pages, for each member state, the figures presented in the first table indicate the number of applications filed and designating the country, the number of those which have been granted by the EPO, the number of these grants which have been validated and entered into force in the country, and the number of European patents still in force at the end of 2016. The data cover the filing period 1997-2016 for which patents can still be in force.

As the patent term is 20 years, the figures cover the applications filed between January 1997 and December 2016.

Applications for a European patent are counted in the year of the international filing date. In the case of the PCT applications only those that entered the regional phase at the EPO are taken into account and they are counted in the year of the international filing date. The statistics reflect the current status of the designations in the EPO granting procedure.

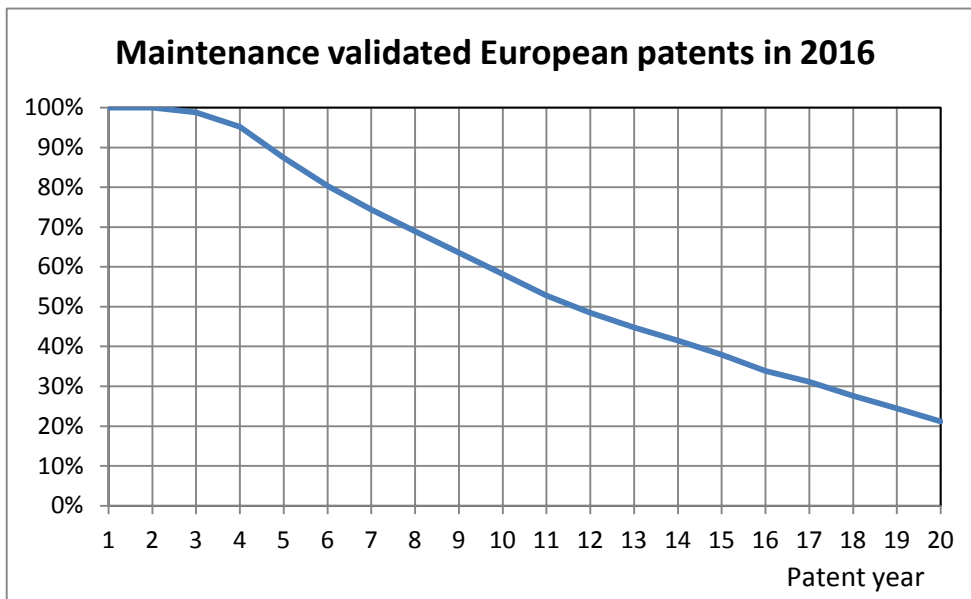
The second table indicate the proportion of granted European patents still in force at the end of each patent year. All data are extracted from the EPO database on the basis of data transmitted by the contracting states offices.

The following table and chart give an overview of the fate of the resulting patent rights granted by the EPO.

Filing year	Applications filed	Granted patents	Validated patents	Patents still in force
	Total counts of designated states			
Total filed: 1997 - 2016	67 020 748	19 474 538	8 577 487	4 941 190
Total filed: 1996 - 2015	61 434 589	16 488 967	7 712 185	4 179 679
<i>Growth: status end of 2016 over status end of 2015</i>	9%	18%	11%	18%

Due to the legal delay for paying the national renewal fees, the number of patents still in force at the end of 2016 is still provisional.

As shown in the chart below, EP patents validated are maintained on average up to 11 years (median). About 21% are maintained up until the expiration of the 20th patent-year.



a) Albania

Filing year	Applications filed	Granted patents	Validated patents	Patents still in force
1997				
1998				
1999				
2000				
2001				
2002				
2003				
2004				
2005				
2006				
2007				
2008				
2009				
2010	96 780	31 922	30 096	29 997
2011	145 305	41 265	40 611	40 522
2012	147 489	33 102	33 091	33 052
2013	150 443	19 986	19 986	19 981
2014	152 795	7 501	7 501	7 501
2015	130 153	1 443	1 443	1 443
2016	57 721	1	1	1

Percentage of patents still in force at the end of the patent year

Filing year	Validated patent	3	4	5	6	7	8	9	10	11	12	13	14	15	16	17	18	19	20
1997																			
1998																			
1999																			
2000																			
2001																			
2002																			
2003																			
2004																			
2005																			
2006																			
2007																			
2008																			
2009																			
2010	30 096	100%	100%	100%	100%	100%													
2011	40 611	100%	100%	100%	100%														
2012	33 092	100%	100%	100%															
2013	19 986	100%	100%																
2014	7 501	100%																	
2015	1 443																		
2016	1																		

b) Austria

Filing year	Applications filed	Granted patents	Validated patents	Patents still in force
1997	35 974	18 665	11 553	1 890
1998	42 743	20 838	12 162	2 423
1999	56 433	27 059	14 058	3 079
2000	74 334	35 573	16 447	3 681
2001	83 841	37 565	16 291	4 169
2002	86 474	38 031	15 624	4 601
2003	91 502	39 830	15 518	5 036
2004	98 830	41 843	15 814	5 511
2005	107 795	43 111	16 086	6 150
2006	114 576	44 712	16 450	6 888
2007	120 406	46 098	16 698	7 521
2008	130 318	49 674	17 447	8 384
2009	133 949	50 635	17 049	8 998
2010	141 761	48 206	16 631	9 497
2011	145 874	41 827	14 599	13 632
2012	148 018	33 622	11 974	11 961
2013	150 799	20 338	8 078	8 075
2014	152 983	7 680	3 260	3 260
2015	130 191	1 480	766	766
2016	57 720	1	1	1

Percentage of patents still in force at the end of the patent year

Filing year	Validated patent	3	4	5	6	7	8	9	10	11	12	13	14	15	16	17	18	19	20
1997	11 553	100%	99%	96%	89%	80%	72%	65%	58%	53%	48%	41%	35%	31%	28%	25%	21%	18%	16%
1998	12 162	100%	99%	95%	88%	80%	73%	66%	61%	54%	47%	42%	37%	33%	29%	25%	22%	20%	
1999	14 058	100%	98%	91%	83%	76%	69%	63%	57%	50%	44%	40%	35%	31%	27%	24%	22%		
2000	16 447	100%	96%	87%	79%	70%	64%	58%	50%	44%	39%	35%	31%	27%	24%	22%			
2001	16 291	100%	95%	87%	78%	71%	64%	56%	50%	45%	40%	36%	32%	28%	26%				
2002	15 624	99%	94%	86%	78%	71%	63%	56%	50%	45%	40%	36%	32%	29%					
2003	15 518	99%	92%	84%	76%	68%	61%	55%	49%	44%	39%	35%	32%						
2004	15 814	99%	91%	83%	74%	67%	60%	53%	47%	42%	37%	35%							
2005	16 086	98%	89%	80%	72%	65%	58%	52%	46%	41%	38%								
2006	16 450	98%	90%	90%	72%	64%	57%	50%	45%	42%									
2007	16 698	98%	98%	98%	70%	61%	54%	48%	45%										
2008	17 447	100%	100%	100%	66%	58%	51%	48%											
2009	17 049	100%	100%	100%	64%	55%	53%												
2010	16 631	100%	100%	100%	60%	57%													
2011	14 599	100%	100%	100%	93%														
2012	11 975	100%	100%	100%															
2013	8 079	100%	100%																
2014	3 260	100%																	
2015	766																		
2016	1																		

c) Belgium

Filing year	Applications filed	Granted patents	Validated patents	Patents still in force
1997	38 987	20 410	13 887	2 613
1998	45 761	22 389	14 606	3 178
1999	57 804	27 784	16 893	3 891
2000	74 586	35 706	20 194	4 643
2001	84 045	37 715	19 999	5 183
2002	86 650	38 200	19 359	5 585
2003	91 879	40 093	19 658	6 028
2004	99 336	42 207	20 516	6 721
2005	108 366	43 583	20 990	7 368
2006	115 139	45 285	21 756	8 208
2007	121 047	46 699	22 050	8 645
2008	131 106	50 465	23 318	9 666
2009	135 004	51 705	23 708	10 714
2010	143 119	49 563	23 250	11 716
2011	147 318	43 276	21 373	12 375
2012	149 264	34 872	18 062	10 692
2013	151 328	20 869	12 304	8 080
2014	153 283	7 981	4 954	2 984
2015	130 179	1 467	1 108	954
2016	57 720	1	1	1

Percentage of patents still in force at the end of the patent year

Filing year	Validated patent	3	4	5	6	7	8	9	10	11	12	13	14	15	16	17	18	19	20
1997	13 887	100%	98%	95%	88%	79%	70%	63%	58%	52%	47%	40%	35%	32%	28%	25%	23%	22%	19%
1998	14 606	100%	99%	95%	87%	78%	70%	64%	59%	53%	45%	40%	36%	32%	28%	26%	25%	22%	
1999	16 893	100%	97%	89%	79%	72%	65%	59%	54%	47%	41%	37%	33%	29%	27%	26%	23%		
2000	20 194	100%	95%	85%	74%	66%	59%	53%	46%	41%	36%	33%	29%	27%	26%	23%			
2001	19 999	99%	94%	85%	75%	67%	59%	51%	46%	41%	37%	33%	31%	29%	26%				
2002	19 359	99%	92%	83%	74%	66%	58%	51%	46%	41%	37%	34%	33%	29%					
2003	19 658	98%	90%	80%	71%	63%	56%	50%	45%	40%	37%	36%	31%						
2004	20 516	98%	88%	78%	68%	61%	54%	48%	43%	39%	38%	33%							
2005	20 990	97%	86%	75%	67%	59%	53%	47%	43%	41%	35%								
2006	21 756	97%	87%	76%	66%	58%	51%	47%	45%	38%									
2007	22 050	97%	86%	74%	64%	56%	51%	48%	39%										
2008	23 318	97%	85%	72%	62%	56%	53%	42%											
2009	23 708	97%	83%	70%	62%	59%	46%												
2010	23 250	96%	83%	73%	68%	51%													
2011	21 373	95%	86%	81%	59%														
2012	18 063	97%	92%	60%															
2013	12 305	98%	68%																
2014	4 954	67%																	
2015	1 108																		
2016	1																		

d) Bulgaria

Filing year	Applications filed	Granted patents	Validated patents	Patents still in force
1997				
1998				
1999				
2000				
2001				
2002	43 724	19 559	2 422	1 173
2003	91 484	40 301	5 111	2 831
2004	99 451	42 781	4 575	3 554
2005	108 780	44 393	5 175	4 316
2006	116 036	46 492	6 193	5 442
2007	122 117	48 023	7 088	6 513
2008	131 813	51 274	9 290	8 839
2009	135 385	52 105	11 042	10 759
2010	143 663	50 109	13 350	13 124
2011	146 879	42 837	14 099	13 969
2012	149 134	34 745	16 182	16 122
2013	150 906	20 447	11 634	11 624
2014	152 812	7 513	4 871	4 871
2015	130 158	1 447	1 052	1 052
2016	57 720	1	1	1

Percentage of patents still in force at the end of the patent year

Filing year	Validated patent	3	4	5	6	7	8	9	10	11	12	13	14	15	16	17	18	19	20
1997																			
1998																			
1999																			
2000																			
2001																			
2002	2 422	100%	100%	100%	77%	73%	73%	69%	66%	59%	57%	53%	51%	48%					
2003	5 111	100%	100%	79%	77%	77%	74%	71%	66%	64%	61%	59%	55%						
2004	4 575	100%	100%	99%	99%	97%	94%	89%	86%	83%	81%	78%							
2005	5 175	100%	100%	100%	98%	96%	92%	91%	88%	86%	83%								
2006	6 193	100%	100%	100%	98%	95%	94%	92%	90%	88%									
2007	7 088	100%	100%	99%	98%	97%	95%	94%	92%										
2008	9 290	100%	100%	99%	98%	98%	96%	95%											
2009	11 042	100%	100%	99%	99%	98%	97%												
2010	13 350	100%	100%	100%	99%	98%													
2011	14 099	100%	100%	100%	99%														
2012	16 182	100%	100%	100%															
2013	11 634	100%	100%																
2014	4 871	100%																	
2015	1 052																		
2016	1																		

e) Switzerland/Liechtenstein

Filing year	Applications filed	Granted patents	Validated patents	Patents still in force
1997	39 659	20 989	15 542	2 718
1998	46 559	23 169	16 957	3 456
1999	59 098	28 766	20 323	4 392
2000	75 633	36 496	25 206	5 289
2001	85 006	38 495	27 788	6 010
2002	87 162	38 781	30 157	6 785
2003	92 605	40 566	33 745	7 802
2004	100 103	42 626	38 548	8 816
2005	108 972	43 748	42 375	9 960
2006	115 617	45 275	45 135	11 146
2007	121 051	46 373	46 372	12 654
2008	130 695	49 888	49 888	14 331
2009	134 013	50 674	50 674	15 946
2010	141 626	48 071	48 071	16 852
2011	145 732	41 689	41 689	17 529
2012	147 801	33 404	33 404	17 447
2013	150 549	20 090	20 090	14 474
2014	152 808	7 504	7 504	7 503
2015	130 158	1 444	1 444	1 444
2016	57 721	1	1	1

Percentage of patents still in force at the end of the patent year

Filing year	Validated patent	3	4	5	6	7	8	9	10	11	12	13	14	15	16	17	18	19	20
1997	15 542	100%	100%	96%	89%	81%	73%	67%	61%	56%	51%	43%	38%	34%	30%	27%	23%	20%	17%
1998	16 957	100%	100%	95%	88%	81%	74%	69%	64%	58%	50%	44%	39%	35%	30%	26%	23%	20%	
1999	20 323	100%	100%	91%	84%	77%	71%	67%	61%	52%	45%	40%	36%	31%	27%	24%	22%		
2000	25 206	100%	100%	88%	81%	74%	69%	62%	52%	45%	40%	35%	30%	26%	23%	21%			
2001	27 788	100%	100%	90%	83%	77%	70%	58%	50%	43%	37%	32%	28%	24%	22%				
2002	30 157	100%	100%	90%	85%	76%	64%	55%	47%	40%	34%	29%	25%	22%					
2003	33 745	100%	100%	90%	82%	69%	59%	51%	43%	36%	30%	26%	23%						
2004	38 548	100%	100%	86%	74%	63%	54%	45%	37%	31%	26%	23%							
2005	42 375	100%	100%	79%	69%	58%	49%	40%	33%	27%	24%								
2006	45 135	100%	100%	77%	66%	54%	44%	36%	29%	25%									
2007	46 372	100%	100%	76%	63%	51%	41%	33%	27%										
2008	49 888	100%	100%	73%	58%	46%	36%	29%											
2009	50 674	100%	100%	68%	53%	40%	31%												
2010	48 071	100%	100%	63%	46%	35%													
2011	41 689	100%	80%	57%	42%														
2012	33 404	100%	74%	52%															
2013	20 090	100%	72%																
2014	7 504	100%																	
2015	1 444																		
2016	1																		

f) Cyprus

Filing year	Applications filed	Granted patents	Validated patents	Patents still in force
1997				
1998	19 797	7 499	1 618	446
1999	46 992	20 856	2 661	836
2000	71 942	34 242	3 342	1 227
2001	81 370	36 475	3 342	1 630
2002	84 009	37 092	3 280	1 943
2003	90 344	39 229	3 647	2 618
2004	98 198	41 525	4 559	3 629
2005	107 316	42 933	5 232	4 450
2006	114 297	44 754	6 787	5 971
2007	120 656	46 566	8 385	7 712
2008	131 888	51 351	11 338	10 693
2009	135 933	52 653	13 994	13 787
2010	144 647	51 093	16 968	16 830
2011	147 260	43 219	19 803	19 742
2012	148 622	34 233	23 925	23 896
2013	150 718	20 260	17 732	17 725
2014	152 800	7 501	7 501	7 501
2015	130 153	1 443	1 443	1 443
2016	57 720	1	1	1

Percentage of patents still in force at the end of the patent year

Filing year	Validated patent	3	4	5	6	7	8	9	10	11	12	13	14	15	16	17	18	19	20
1997																			
1998	1 618	99%	93%	92%	88%	84%	78%	71%	66%	60%	51%	45%	42%	38%	34%	32%	29%	28%	
1999	2 661	97%	97%	95%	91%	85%	78%	73%	67%	61%	51%	47%	42%	39%	36%	33%	31%		
2000	3 342	100%	100%	97%	93%	87%	82%	76%	68%	60%	54%	50%	45%	42%	38%	37%			
2001	3 342	100%	100%	98%	95%	90%	86%	79%	73%	68%	63%	58%	55%	52%	49%				
2002	3 280	100%	100%	98%	96%	93%	88%	82%	77%	72%	68%	64%	62%	59%					
2003	3 647	100%	100%	99%	97%	94%	88%	85%	82%	79%	77%	74%	72%						
2004	4 559	100%	100%	99%	97%	93%	90%	88%	85%	83%	81%	80%							
2005	5 232	100%	100%	99%	95%	93%	91%	90%	88%	86%	85%								
2006	6 787	100%	100%	95%	94%	93%	92%	90%	89%	88%									
2007	8 385	100%	97%	96%	96%	95%	94%	93%	92%										
2008	11 338	97%	97%	97%	96%	96%	95%	94%											
2009	13 995	100%	100%	99%	99%	99%	99%												
2010	16 969	100%	100%	100%	100%	99%													
2011	19 803	100%	100%	100%	100%														
2012	23 926	100%	100%	100%															
2013	17 733	100%	100%																
2014	7 501	100%																	
2015	1 443																		
2016	1																		

g) Czech Republic

Filing year	Applications filed	Granted patents	Validated patents	Patents still in force
1997				
1998				
1999				
2000				
2001				
2002	42 939	19 192	3 100	1 578
2003	90 697	39 509	5 938	3 180
2004	98 413	41 627	6 325	3 711
2005	107 370	42 879	6 027	3 984
2006	114 279	44 637	6 335	4 610
2007	120 246	46 079	6 372	5 013
2008	130 397	49 809	6 897	5 882
2009	134 328	51 041	7 257	6 560
2010	142 439	48 884	7 498	7 052
2011	146 585	42 543	7 532	7 304
2012	148 629	34 240	7 309	7 242
2013	151 084	20 625	6 252	6 232
2014	153 055	7 755	2 993	2 991
2015	130 161	1 451	969	969
2016	57 720	1	1	1

Percentage of patents still in force at the end of the patent year

Filing year	Validated patent	3	4	5	6	7	8	9	10	11	12	13	14	15	16	17	18	19	20
1997																			
1998																			
1999																			
2000																			
2001																			
2002	3 100	100%	100%	98%	95%	92%	84%	78%	73%	67%	62%	58%	53%	51%					
2003	5 938	100%	99%	97%	95%	89%	83%	78%	73%	67%	62%	57%	54%						
2004	6 325	100%	99%	97%	92%	87%	82%	77%	72%	67%	62%	59%							
2005	6 027	100%	100%	97%	93%	90%	85%	80%	74%	69%	66%								
2006	6 335	100%	99%	98%	94%	91%	86%	81%	76%	73%									
2007	6 372	100%	99%	98%	95%	91%	87%	82%	79%										
2008	6 897	100%	100%	99%	96%	93%	89%	85%											
2009	7 258	100%	100%	98%	96%	93%	90%												
2010	7 499	100%	100%	98%	96%	94%													
2011	7 532	100%	100%	99%	97%														
2012	7 310	100%	100%	99%															
2013	6 253	100%	100%																
2014	2 995	100%																	
2015	969																		
2016	1																		

h) Germany

Filing year	Applications filed	Granted patents	Validated patents	Patents still in force
1997	82 789	49 262	46 795	13 053
1998	93 316	52 957	50 333	17 023
1999	102 047	55 594	52 958	20 867
2000	114 160	59 997	57 069	25 430
2001	121 571	60 854	58 488	29 101
2002	121 013	58 990	57 130	31 771
2003	126 387	59 508	58 031	35 507
2004	132 561	60 084	59 174	39 194
2005	140 715	60 537	60 041	42 819
2006	145 621	60 699	60 554	46 031
2007	145 104	58 875	58 784	47 254
2008	143 727	57 404	57 303	48 003
2009	136 463	51 815	51 724	45 256
2010	141 057	47 496	47 472	42 888
2011	145 308	41 270	41 270	38 691
2012	147 520	33 130	33 130	31 892
2013	150 447	19 995	19 995	19 562
2014	152 795	7 513	7 513	7 419
2015	130 142	1 441	1 441	1 440
2016	57 718	1	1	1

Percentage of patents still in force at the end of the patent year

Filing year	Validated patent	3	4	5	6	7	8	9	10	11	12	13	14	15	16	17	18	19	20
1997	46 795	100%	100%	100%	98%	96%	92%	87%	82%	78%	72%	66%	59%	54%	50%	45%	39%	34%	28%
1998	50 333	100%	100%	100%	98%	96%	92%	88%	84%	79%	72%	65%	60%	56%	51%	45%	40%	34%	
1999	52 958	100%	100%	100%	98%	96%	92%	89%	84%	78%	71%	65%	61%	56%	50%	45%	39%		
2000	57 069	100%	100%	99%	98%	95%	92%	88%	83%	76%	71%	66%	61%	56%	50%	45%			
2001	58 488	100%	100%	99%	98%	96%	93%	88%	81%	76%	72%	67%	61%	55%	50%				
2002	57 130	100%	100%	99%	98%	96%	92%	86%	82%	77%	72%	67%	61%	56%					
2003	58 031	100%	100%	99%	98%	95%	90%	86%	82%	77%	72%	67%	61%						
2004	59 174	100%	100%	99%	97%	93%	90%	86%	82%	77%	72%	66%							
2005	60 041	100%	100%	99%	96%	93%	90%	86%	82%	77%	71%								
2006	60 554	100%	99%	98%	96%	94%	90%	86%	81%	76%									
2007	58 784	100%	99%	98%	96%	94%	89%	85%	80%										
2008	57 303	100%	99%	98%	96%	93%	89%	84%											
2009	51 724	100%	100%	98%	95%	92%	87%												
2010	47 472	100%	99%	98%	95%	90%													
2011	41 270	100%	99%	97%	94%														
2012	33 130	100%	99%	96%															
2013	19 995	100%	98%																
2014	7 513	99%																	
2015	1 441																		
2016	1																		

i) Denmark

Filing year	Applications filed	Granted patents	Validated patents	Patents still in force
1997	31 436	15 452	6 724	1 550
1998	38 014	17 376	6 890	1 905
1999	53 271	24 789	7 370	2 395
2000	72 288	34 739	8 059	2 868
2001	80 869	36 747	7 677	3 359
2002	83 917	37 416	7 262	3 658
2003	90 758	39 466	7 314	4 083
2004	98 327	41 504	7 305	4 625
2005	107 338	42 800	7 144	4 901
2006	114 093	44 377	7 431	5 578
2007	119 992	45 787	7 388	5 954
2008	130 050	49 457	7 891	6 813
2009	133 831	50 538	8 375	7 644
2010	141 852	48 297	8 677	8 245
2011	146 016	41 973	8 734	8 526
2012	148 044	33 656	8 353	8 287
2013	150 787	20 328	7 613	7 595
2014	152 940	7 640	3 618	3 616
2015	130 160	1 450	1 129	1 129
2016	57 720	1	1	1

Percentage of patents still in force at the end of the patent year

Filing year	Validated patent	3	4	5	6	7	8	9	10	11	12	13	14	15	16	17	18	19	20
1997	6 724	100%	100%	98%	95%	89%	82%	75%	69%	64%	58%	50%	45%	40%	36%	31%	28%	25%	23%
1998	6 890	100%	100%	99%	96%	90%	84%	77%	72%	67%	58%	51%	47%	42%	37%	33%	29%	28%	
1999	7 370	100%	100%	98%	94%	89%	84%	79%	73%	65%	58%	53%	48%	43%	39%	34%	32%		
2000	8 059	100%	100%	97%	94%	89%	84%	78%	70%	63%	57%	52%	47%	42%	37%	36%			
2001	7 678	100%	100%	98%	95%	91%	86%	78%	72%	67%	61%	56%	51%	46%	44%				
2002	7 262	100%	100%	98%	96%	92%	85%	79%	74%	68%	62%	57%	53%	50%					
2003	7 314	100%	100%	98%	96%	90%	85%	81%	75%	69%	64%	59%	56%						
2004	7 305	100%	100%	98%	94%	90%	86%	81%	76%	70%	65%	63%							
2005	7 144	100%	100%	98%	95%	92%	87%	82%	77%	71%	69%								
2006	7 431	100%	99%	98%	96%	92%	88%	83%	77%	75%									
2007	7 388	100%	99%	98%	96%	92%	88%	83%	81%										
2008	7 891	100%	100%	99%	96%	92%	88%	86%											
2009	8 376	100%	100%	98%	96%	93%	91%												
2010	8 678	100%	100%	98%	96%	95%													
2011	8 734	100%	100%	99%	98%														
2012	8 354	100%	100%	99%															
2013	7 614	100%	100%																
2014	3 620	100%																	
2015	1 129																		
2016	1																		

j) Estonia

Filing year	Applications filed	Granted patents	Validated patents	Patents still in force
1997				
1998				
1999				
2000				
2001				
2002	42 720	19 085	1 601	985
2003	90 428	39 409	2 999	1 929
2004	98 292	41 644	3 197	2 297
2005	107 427	43 070	3 213	2 528
2006	114 441	44 907	3 616	3 034
2007	120 551	46 460	3 798	3 383
2008	131 141	50 604	4 640	4 305
2009	135 273	51 993	5 323	5 161
2010	143 363	49 809	5 879	5 729
2011	147 651	43 609	6 353	6 304
2012	149 278	34 889	6 224	6 208
2013	151 293	20 834	5 474	5 470
2014	153 231	7 932	2 884	2 884
2015	130 162	1 452	922	922
2016	57 720	1	1	1

Percentage of patents still in force at the end of the patent year

Filing year	Validated patent	3	4	5	6	7	8	9	10	11	12	13	14	15	16	17	18	19	20
1997																			
1998																			
1999																			
2000																			
2001																			
2002	1 601	100%	100%	99%	97%	94%	88%	84%	78%	73%	69%	66%	63%	62%					
2003	2 999	100%	100%	99%	97%	92%	87%	83%	79%	75%	71%	67%	64%						
2004	3 197	100%	100%	98%	95%	92%	88%	84%	80%	77%	73%	72%							
2005	3 213	100%	100%	98%	96%	94%	90%	87%	84%	81%	79%								
2006	3 616	100%	100%	99%	97%	94%	92%	89%	86%	84%									
2007	3 798	100%	99%	98%	97%	95%	93%	91%	89%										
2008	4 640	100%	100%	99%	98%	96%	94%	93%											
2009	5 324	100%	100%	99%	99%	98%	97%												
2010	5 880	100%	100%	99%	98%	97%													
2011	6 353	100%	100%	100%	99%														
2012	6 225	100%	100%	100%															
2013	5 475	100%	100%																
2014	2 886	100%																	
2015	922																		
2016	1																		

k) Spain

Filing year	Applications filed	Granted patents	Validated patents	Patents still in force
1997	46 251	25 647	17 757	4 059
1998	54 178	28 523	18 419	5 028
1999	65 507	33 153	19 584	6 512
2000	79 589	39 664	20 920	7 542
2001	87 227	41 023	20 627	8 972
2002	89 487	41 052	19 822	9 674
2003	95 659	42 514	19 601	10 616
2004	102 806	44 226	19 288	11 430
2005	111 190	45 092	18 504	12 350
2006	117 499	46 340	18 030	13 699
2007	122 735	47 287	17 537	14 493
2008	131 442	50 223	17 166	14 752
2009	133 953	50 524	15 727	14 234
2010	141 472	47 912	13 951	13 072
2011	145 715	41 674	12 063	11 714
2012	147 834	33 442	9 723	9 612
2013	150 703	20 244	6 326	6 313
2014	152 917	7 617	2 374	2 373
2015	130 195	1 483	561	561
2016	57 720	1	1	1

Percentage of patents still in force at the end of the patent year

Filing year	Validated patent	3	4	5	6	7	8	9	10	11	12	13	14	15	16	17	18	19	20
1997	17 758	99%	96%	95%	92%	87%	81%	75%	69%	63%	58%	50%	44%	40%	36%	31%	27%	23%	23%
1998	18 420	100%	99%	98%	96%	91%	85%	79%	73%	67%	58%	52%	47%	42%	37%	32%	28%	27%	
1999	19 584	100%	100%	99%	95%	91%	85%	79%	73%	65%	58%	53%	48%	43%	38%	34%	33%		
2000	20 920	100%	100%	98%	95%	91%	85%	79%	71%	64%	57%	52%	47%	42%	37%	36%			
2001	20 627	100%	100%	99%	95%	92%	86%	78%	71%	65%	59%	54%	48%	44%	43%				
2002	19 823	100%	100%	98%	95%	91%	83%	77%	71%	66%	60%	54%	49%	49%					
2003	19 602	100%	99%	97%	95%	89%	83%	77%	72%	66%	60%	55%	54%						
2004	19 291	100%	99%	98%	93%	89%	83%	78%	72%	66%	60%	59%							
2005	18 505	100%	99%	97%	94%	90%	85%	79%	73%	68%	67%								
2006	18 030	100%	99%	98%	95%	91%	86%	80%	76%	76%									
2007	17 565	100%	99%	98%	95%	91%	85%	83%	83%										
2008	17 167	100%	100%	98%	95%	91%	86%	86%											
2009	15 736	100%	99%	97%	94%	91%	90%												
2010	13 951	100%	100%	98%	95%	94%													
2011	12 063	100%	100%	98%	97%														
2012	9 723	100%	99%	99%															
2013	6 327	100%	100%																
2014	2 375	100%																	
2015	561																		
2016	1																		

I) Finland

Filing year	Applications atled	Granted patents	Validated patents	Patents still in force
1997	29 377	14 235	5 883	1 319
1998	36 620	16 597	6 084	1 658
1999	53 203	24 865	6 777	2 093
2000	73 100	35 300	7 470	2 550
2001	81 602	37 245	7 058	2 912
2002	84 494	37 794	6 509	3 006
2003	91 513	39 906	6 293	3 272
2004	99 024	41 950	6 003	3 497
2005	107 981	43 227	5 802	3 771
2006	114 745	44 751	5 701	4 022
2007	120 565	46 158	5 307	3 994
2008	130 473	49 828	5 364	4 344
2009	134 372	51 073	5 153	4 496
2010	142 538	48 982	4 983	4 565
2011	146 873	42 829	4 470	4 294
2012	149 072	34 681	3 776	3 707
2013	151 676	21 216	2 603	2 588
2014	153 618	8 318	1 195	1 194
2015	130 417	1 706	346	346
2016	57 721	2	1	1

Percentage of patents still in force at the end of the patent year

Filing year	Validated patent	3	4	5	6	7	8	9	10	11	12	13	14	15	16	17	18	19	20
1997	5 883	98%	98%	97%	94%	88%	81%	74%	68%	63%	57%	50%	44%	40%	35%	31%	27%	25%	22%
1998	6 084	100%	100%	99%	96%	90%	84%	78%	73%	66%	58%	52%	47%	42%	38%	34%	30%	27%	
1999	6 777	100%	100%	98%	94%	89%	83%	78%	72%	64%	58%	52%	47%	43%	39%	34%	31%		
2000	7 470	100%	100%	97%	94%	89%	84%	78%	69%	63%	57%	51%	46%	41%	37%	34%			
2001	7 058	100%	100%	98%	96%	92%	86%	78%	72%	66%	60%	54%	49%	45%	41%				
2002	6 509	100%	100%	98%	96%	92%	84%	78%	72%	66%	60%	55%	50%	46%					
2003	6 293	100%	100%	98%	96%	90%	85%	79%	73%	67%	62%	56%	52%						
2004	6 003	100%	100%	98%	94%	89%	84%	78%	73%	67%	62%	58%							
2005	5 802	100%	99%	97%	94%	90%	85%	80%	74%	69%	65%								
2006	5 701	100%	99%	98%	95%	91%	86%	80%	74%	71%									
2007	5 307	100%	100%	98%	95%	90%	85%	79%	75%										
2008	5 364	100%	100%	98%	95%	90%	85%	81%											
2009	5 154	100%	100%	98%	94%	91%	87%												
2010	4 984	100%	100%	98%	95%	92%													
2011	4 470	100%	100%	98%	96%														
2012	3 777	100%	100%	98%															
2013	2 604	100%	99%																
2014	1 197	100%																	
2015	346																		
2016	2																		

m) France

Filing year	Applications filed	Granted patents	Validated patents	Patents still in force
1997	78 030	46 050	41 593	9 780
1998	88 055	49 639	44 552	12 558
1999	96 932	52 340	47 148	15 659
2000	109 419	57 080	50 917	18 841
2001	116 699	57 921	52 227	21 720
2002	116 511	56 391	51 800	23 879
2003	121 857	56 943	53 306	27 112
2004	128 227	57 674	55 182	30 289
2005	136 007	58 014	56 814	33 256
2006	140 545	57 952	57 750	36 224
2007	141 060	56 588	56 586	37 839
2008	140 684	55 496	55 496	38 863
2009	135 792	51 435	51 435	37 486
2010	141 103	47 541	47 541	36 347
2011	145 339	41 296	41 296	33 275
2012	147 572	33 174	33 174	28 371
2013	150 468	20 014	20 014	18 356
2014	152 825	7 520	7 520	7 133
2015	130 161	1 446	1 446	1 445
2016	57 721	1	1	1

Percentage of patents still in force at the end of the patent year

Filing year	Validated patent	3	4	5	6	7	8	9	10	11	12	13	14	15	16	17	18	19	20
1997	41 593	100%	100%	99%	98%	95%	90%	85%	76%	70%	64%	57%	51%	47%	42%	37%	32%	26%	24%
1998	44 552	100%	100%	99%	97%	94%	90%	82%	77%	71%	62%	57%	52%	47%	42%	36%	31%	28%	
1999	47 148	100%	100%	99%	97%	93%	87%	82%	77%	69%	62%	57%	53%	47%	41%	36%	33%		
2000	50 917	100%	100%	99%	96%	92%	87%	82%	74%	68%	62%	57%	51%	45%	40%	37%			
2001	52 227	100%	100%	98%	96%	93%	88%	80%	74%	68%	63%	56%	51%	45%	42%				
2002	51 800	100%	99%	98%	96%	92%	85%	79%	73%	68%	61%	55%	49%	46%					
2003	53 306	100%	99%	98%	96%	89%	84%	78%	73%	66%	60%	54%	51%						
2004	55 182	100%	99%	98%	92%	88%	82%	77%	70%	64%	58%	55%							
2005	56 814	100%	99%	95%	91%	86%	81%	74%	68%	62%	59%								
2006	57 750	100%	97%	94%	90%	85%	78%	73%	66%	63%									
2007	56 586	100%	97%	94%	89%	83%	77%	71%	67%										
2008	55 496	100%	97%	93%	87%	81%	74%	70%											
2009	51 435	99%	96%	91%	84%	77%	73%												
2010	47 541	99%	95%	89%	81%	76%													
2011	41 296	99%	94%	86%	81%														
2012	33 174	98%	92%	86%															
2013	20 014	97%	92%																
2014	7 520	95%																	
2015	1 446																		
2016	1																		

n) United Kingdom

Filing year	Applications filed	Granted patents	Validated patents	Patents still in force
1997	79 029	46 817	44 732	10 180
1998	88 930	50 157	47 616	12 873
1999	97 597	52 610	49 811	15 748
2000	109 491	57 012	53 736	18 883
2001	116 635	57 581	54 575	21 745
2002	116 037	55 859	53 203	23 650
2003	121 022	56 128	53 984	26 288
2004	127 121	56 687	55 022	29 118
2005	134 995	57 097	56 318	31 782
2006	139 506	56 987	56 885	34 344
2007	139 993	55 672	55 671	35 364
2008	140 317	55 013	55 013	36 351
2009	135 593	51 232	51 232	35 091
2010	140 959	47 422	47 422	33 929
2011	145 202	41 186	41 186	31 130
2012	147 421	33 077	33 077	28 337
2013	150 368	19 955	19 955	19 944
2014	152 770	7 504	7 504	7 503
2015	130 143	1 444	1 444	1 441
2016	57 718	1	1	1

Percentage of patents still in force at the end of the patent year

Filing year	Validated patent	3	4	5	6	7	8	9	10	11	12	13	14	15	16	17	18	19	20
1997	44 732	100%	100%	99%	96%	91%	85%	79%	74%	68%	62%	54%	49%	45%	40%	35%	31%	26%	23%
1998	47 616	100%	100%	99%	95%	90%	85%	80%	74%	68%	60%	54%	49%	45%	40%	35%	30%	27%	
1999	49 811	100%	100%	98%	94%	90%	85%	79%	74%	66%	59%	55%	50%	45%	40%	34%	32%		
2000	53 736	100%	100%	97%	94%	89%	84%	78%	70%	64%	59%	54%	48%	43%	38%	35%			
2001	54 575	100%	100%	98%	94%	90%	85%	77%	71%	65%	60%	54%	49%	43%	40%				
2002	53 203	100%	100%	97%	94%	89%	82%	76%	70%	65%	59%	53%	48%	44%					
2003	53 984	100%	100%	97%	93%	86%	80%	75%	70%	63%	58%	52%	49%						
2004	55 022	100%	100%	96%	90%	85%	79%	74%	68%	62%	56%	53%							
2005	56 318	100%	100%	93%	89%	84%	78%	72%	66%	60%	56%								
2006	56 885	100%	100%	92%	88%	82%	76%	70%	64%	60%									
2007	55 671	100%	100%	91%	86%	80%	73%	67%	64%										
2008	55 013	100%	100%	90%	83%	77%	70%	66%											
2009	51 232	100%	100%	87%	80%	73%	68%												
2010	47 422	100%	100%	85%	77%	72%													
2011	41 186	100%	100%	82%	76%														
2012	33 077	100%	100%	86%															
2013	19 955	100%	100%																
2014	7 504	100%																	
2015	1 444																		
2016	1																		

o) Greece

Filing year	Applications filed	Granted patents	Validated patents	Patents still in force
1997	26 027	11 994	4 226	924
1998	32 344	13 848	4 140	1 077
1999	50 112	22 846	4 765	1 448
2000	71 612	34 396	5 340	1 768
2001	80 335	36 576	5 099	2 057
2002	83 611	37 355	4 829	2 270
2003	90 676	39 565	4 593	2 477
2004	98 610	41 921	4 716	2 864
2005	107 614	43 226	4 479	2 933
2006	114 562	45 000	4 536	3 255
2007	120 557	46 444	4 227	3 243
2008	131 144	50 595	4 458	3 631
2009	135 245	51 961	4 476	3 904
2010	143 610	50 056	4 607	4 060
2011	147 805	43 764	4 157	3 963
2012	149 726	35 338	3 503	3 473
2013	152 014	21 556	2 323	2 315
2014	153 732	8 433	1 167	1 166
2015	130 535	1 824	435	435
2016	57 721	2	1	1

Percentage of patents still in force at the end of the patent year

Filing year	Validated patent	3	4	5	6	7	8	9	10	11	12	13	14	15	16	17	18	19	20
1997	4 226	97%	93%	92%	89%	84%	79%	71%	67%	61%	57%	51%	44%	40%	36%	31%	28%	24%	22%
1998	4 140	99%	99%	98%	95%	90%	82%	77%	71%	66%	59%	51%	46%	42%	37%	33%	29%	26%	
1999	4 765	100%	99%	97%	95%	89%	84%	78%	74%	67%	58%	52%	47%	42%	38%	34%	30%		
2000	5 340	100%	99%	97%	93%	88%	83%	77%	70%	62%	56%	51%	46%	41%	37%	33%			
2001	5 100	100%	99%	97%	93%	90%	87%	79%	72%	66%	60%	54%	49%	45%	40%				
2002	4 829	100%	98%	95%	94%	92%	87%	80%	74%	69%	62%	56%	51%	47%					
2003	4 593	100%	99%	97%	96%	92%	86%	81%	76%	70%	64%	59%	54%						
2004	4 716	100%	99%	98%	95%	91%	87%	82%	74%	70%	65%	61%							
2005	4 479	100%	99%	98%	95%	92%	87%	79%	74%	70%	65%								
2006	4 536	100%	100%	99%	97%	93%	86%	82%	76%	72%									
2007	4 227	100%	100%	99%	97%	90%	86%	81%	77%										
2008	4 458	100%	100%	98%	92%	89%	86%	81%											
2009	4 476	100%	99%	94%	92%	90%	87%												
2010	4 607	99%	92%	92%	90%	88%													
2011	4 157	97%	97%	97%	95%														
2012	3 503	100%	100%	99%															
2013	2 323	100%	100%																
2014	1 167	100%																	
2015	435																		
2016	1																		

p) Croatia

Filing year	Applications filed	Granted patents	Validated patents	Patents still in force
1997				
1998				
1999				
2000				
2001				
2002				
2003				
2004				
2005				
2006				
2007				
2008	131 273	50 757	3 747	3 382
2009	135 075	51 796	4 153	3 929
2010	142 784	49 229	4 255	4 092
2011	146 903	42 861	3 876	3 825
2012	148 549	34 161	3 050	3 023
2013	151 010	20 551	2 233	2 229
2014	153 121	7 822	1 012	1 012
2015	130 364	1 653	300	300
2016	57 721	2	1	1

Percentage of patents still in force at the end of the patent year

Filing year	Validated patent	3	4	5	6	7	8	9	10	11	12	13	14	15	16	17	18	19	20
1997																			
1998																			
1999																			
2000																			
2001																			
2002																			
2003																			
2004																			
2005																			
2006																			
2007																			
2008	3 747	100%	100%	99%	97%	95%	92%	90%											
2009	4 154	100%	100%	99%	98%	96%	95%												
2010	4 256	100%	100%	99%	98%	96%													
2011	3 876	100%	100%	99%	99%														
2012	3 051	100%	100%	99%															
2013	2 234	100%	100%																
2014	1 014	100%																	
2015	300																		
2016	2																		

q) Hungary

Filing year	Applications filed	Granted patents	Validated patents	Patents still in force
1997				
1998				
1999				
2000				
2001				
2002				
2003	91 307	40 381	7 023	4 851
2004	99 443	42 736	8 067	6 028
2005	108 657	44 245	8 913	7 184
2006	115 954	46 325	10 442	8 986
2007	122 220	47 985	12 071	10 865
2008	132 681	52 086	15 050	14 115
2009	136 757	53 465	17 847	17 279
2010	144 349	50 794	20 109	19 656
2011	147 500	43 458	21 733	21 531
2012	148 842	34 452	24 435	24 358
2013	150 799	20 340	17 765	17 753
2014	152 804	7 505	7 493	7 493
2015	130 154	1 443	1 443	1 443
2016	57 720	1	1	1

Percentage of patents still in force at the end of the patent year

Filing year	Validated patent	3	4	5	6	7	8	9	10	11	12	13	14	15	16	17	18	19	20
1997																			
1998																			
1999																			
2000																			
2001																			
2002																			
2003	7 023	100%	100%	99%	97%	93%	89%	86%	82%	78%	75%	71%	69%						
2004	8 067	100%	100%	98%	95%	93%	90%	86%	82%	79%	76%	75%							
2005	8 913	100%	100%	98%	96%	94%	91%	88%	85%	82%	81%								
2006	10 442	100%	100%	99%	97%	95%	93%	90%	88%	86%									
2007	12 071	100%	100%	99%	98%	96%	94%	92%	90%										
2008	15 050	100%	100%	99%	98%	97%	95%	94%											
2009	17 847	100%	100%	99%	99%	98%	97%												
2010	20 109	100%	100%	99%	98%	98%													
2011	21 733	100%	100%	100%	99%														
2012	24 435	100%	100%	100%															
2013	17 765	100%	100%																
2014	7 493	100%																	
2015	1 443																		
2016	1																		

r) Ireland

Filing year	Applications filed	Granted patents	Validated patents	Patents still in force
1997	27 958	13 113	11 672	1 492
1998	34 632	15 158	13 266	1 811
1999	51 802	23 757	18 542	2 344
2000	72 238	34 766	25 320	2 962
2001	80 977	36 874	27 075	3 568
2002	83 857	37 396	27 625	3 943
2003	90 774	39 443	29 626	4 606
2004	98 456	41 547	31 462	5 428
2005	107 339	42 739	32 771	5 982
2006	114 227	44 416	35 077	7 041
2007	120 210	45 871	37 608	8 204
2008	130 152	49 480	42 951	10 054
2009	133 790	50 479	47 209	11 844
2010	141 655	48 102	47 537	13 569
2011	145 806	41 764	41 762	15 165
2012	147 861	33 473	33 473	16 777
2013	150 595	20 137	20 137	13 708
2014	152 884	7 585	7 585	6 153
2015	130 153	1 443	1 443	1 443
2016	57 720	1	1	1

Percentage of patents still in force at the end of the patent year

Filing year	Validated patent	3	4	5	6	7	8	9	10	11	12	13	14	15	16	17	18	19	20
1997	11 672	100%	98%	95%	87%	73%	61%	53%	46%	40%	35%	29%	26%	23%	20%	18%	15%	14%	13%
1998	13 266	100%	100%	95%	83%	71%	60%	51%	45%	39%	33%	29%	25%	22%	19%	17%	15%	14%	
1999	18 542	100%	98%	88%	75%	63%	53%	45%	39%	33%	28%	24%	21%	18%	16%	13%	13%		
2000	25 320	100%	95%	84%	71%	58%	49%	41%	34%	29%	24%	21%	17%	15%	13%	12%			
2001	27 075	100%	96%	85%	72%	59%	50%	41%	34%	29%	24%	20%	17%	14%	13%				
2002	27 625	99%	94%	83%	70%	60%	50%	42%	35%	28%	23%	19%	16%	14%					
2003	29 626	99%	92%	81%	69%	58%	49%	41%	34%	27%	21%	17%	16%						
2004	31 462	99%	91%	81%	69%	59%	50%	40%	31%	25%	19%	17%							
2005	32 771	99%	91%	81%	70%	59%	48%	37%	28%	21%	18%								
2006	35 077	99%	91%	81%	70%	57%	43%	32%	24%	20%									
2007	37 608	99%	92%	81%	66%	50%	37%	27%	22%										
2008	42 951	99%	91%	77%	58%	42%	29%	23%											
2009	47 210	98%	86%	65%	48%	32%	25%												
2010	47 538	96%	79%	57%	38%	29%													
2011	41 762	94%	76%	49%	36%														
2012	33 473	92%	69%	50%															
2013	20 137	87%	68%																
2014	7 585	81%																	
2015	1 443																		
2016	1																		

s) Iceland

Filing year	Applications filed	Granted patents	Validated patents	Patents still in force
1997				
1998				
1999				
2000				
2001				
2002				
2003				
2004	18 795	8 096	795	747
2005	107 262	42 920	2 747	2 524
2006	114 221	44 689	3 190	3 125
2007	120 377	46 282	3 686	3 644
2008	130 728	50 196	4 656	4 618
2009	134 807	51 529	5 754	5 730
2010	142 842	49 288	6 439	6 418
2011	146 630	42 588	6 698	6 688
2012	148 508	34 119	7 138	7 130
2013	151 144	20 685	6 399	6 396
2014	153 069	7 770	3 161	3 161
2015	130 172	1 461	753	753
2016	57 720	1	1	1

Percentage of patents still in force at the end of the patent year

Filing year	Validated patent	3	4	5	6	7	8	9	10	11	12	13	14	15	16	17	18	19	20
1997																			
1998																			
1999																			
2000																			
2001																			
2002																			
2003																			
2004	795	100%	97%	96%	95%	94%	94%	94%	94%	94%	94%	94%							
2005	2 747	97%	96%	95%	94%	93%	93%	93%	93%	92%	92%								
2006	3 190	100%	99%	99%	99%	99%	99%	99%	98%	98%									
2007	3 686	100%	100%	100%	100%	99%	99%	99%	99%										
2008	4 656	100%	100%	100%	100%	100%	99%	99%											
2009	5 754	100%	100%	100%	100%	100%	100%												
2010	6 439	100%	100%	100%	100%	100%													
2011	6 698	100%	100%	100%	100%														
2012	7 138	100%	100%	100%															
2013	6 399	100%	100%																
2014	3 161	100%																	
2015	753																		
2016	1																		

t) Italy

Filing year	Applications filed	Granted patents	Validated patents	Patents still in force
1997	62 456	36 285	27 438	5 824
1998	71 272	39 365	28 926	7 329
1999	80 382	42 783	30 289	9 173
2000	92 013	47 428	31 845	10 789
2001	99 047	48 219	31 692	12 353
2002	100 310	47 697	30 799	13 503
2003	105 372	48 227	30 300	15 025
2004	111 846	49 479	30 022	16 403
2005	119 750	50 073	28 590	17 677
2006	125 146	50 755	27 304	19 125
2007	128 530	50 827	26 560	20 102
2008	134 135	52 006	25 477	20 702
2009	134 460	50 855	23 434	20 285
2010	141 273	47 710	21 476	19 665
2011	145 534	41 489	19 109	18 101
2012	147 701	33 307	16 226	15 929
2013	150 590	20 130	11 130	11 127
2014	152 862	7 561	4 621	4 621
2015	130 162	1 451	1 150	1 150
2016	57 720	1	1	1

Percentage of patents still in force at the end of the patent year

Filing year	Validated patent	3	4	5	6	7	8	9	10	11	12	13	14	15	16	17	18	19	20
1997	27 438	100%	100%	100%	100%	100%	99%	80%	79%	68%	61%	52%	46%	41%	37%	32%	28%	23%	21%
1998	28 926	100%	100%	100%	100%	100%	87%	86%	76%	68%	59%	52%	47%	42%	38%	33%	28%	25%	
1999	30 289	100%	100%	100%	100%	92%	91%	81%	74%	65%	59%	53%	48%	43%	38%	33%	30%		
2000	31 845	100%	100%	100%	96%	96%	87%	79%	70%	63%	57%	52%	47%	42%	36%	34%			
2001	31 692	100%	100%	99%	99%	92%	85%	77%	70%	65%	59%	53%	48%	42%	39%				
2002	30 799	100%	100%	100%	95%	88%	81%	75%	70%	65%	59%	53%	47%	44%					
2003	30 300	100%	100%	97%	91%	86%	80%	76%	71%	64%	59%	52%	50%						
2004	30 022	100%	99%	94%	90%	85%	81%	76%	70%	64%	58%	55%							
2005	28 590	100%	97%	94%	91%	88%	83%	77%	72%	65%	62%								
2006	27 304	100%	100%	98%	95%	91%	86%	80%	74%	70%									
2007	26 560	100%	100%	98%	95%	90%	85%	79%	76%										
2008	25 477	100%	100%	98%	95%	90%	84%	81%											
2009	23 435	100%	100%	97%	94%	89%	87%												
2010	21 476	100%	100%	98%	94%	92%													
2011	19 109	100%	100%	97%	95%														
2012	16 226	100%	100%	98%															
2013	11 130	100%	100%																
2014	4 621	100%																	
2015	1 150																		
2016	1																		

u) Lithuania

Filing year	Applications filed	Granted patents	Validated patents	Patents still in force
1997				
1998				
1999				
2000				
2001				
2002				
2003				
2004	10 208	4 514	578	497
2005	107 737	43 392	3 092	2 373
2006	114 795	45 261	3 358	2 752
2007	121 164	47 068	3 494	3 063
2008	132 163	51 626	4 301	3 952
2009	136 726	53 447	4 821	4 640
2010	145 177	51 623	5 202	5 059
2011	149 832	45 790	5 300	5 249
2012	151 242	36 853	4 309	4 294
2013	152 978	22 519	2 874	2 872
2014	154 322	9 023	1 609	1 609
2015	130 709	1 999	578	578
2016	57 721	2	1	1

Percentage of patents still in force at the end of the patent year

Filing year	Validated patent	3	4	5	6	7	8	9	10	11	12	13	14	15	16	17	18	19	20
1997																			
1998																			
1999																			
2000																			
2001																			
2002																			
2003																			
2004	578	100%	100%	99%	98%	97%	95%	92%	89%	87%	86%	86%							
2005	3 092	100%	100%	98%	96%	93%	89%	86%	82%	79%	77%								
2006	3 358	100%	99%	99%	96%	94%	91%	88%	84%	82%									
2007	3 494	100%	100%	99%	97%	95%	92%	90%	88%										
2008	4 301	100%	100%	99%	98%	96%	94%	92%											
2009	4 822	100%	100%	99%	99%	98%	96%												
2010	5 203	100%	100%	99%	98%	97%													
2011	5 300	100%	100%	100%	99%														
2012	4 310	100%	100%	100%															
2013	2 875	100%	100%																
2014	1 611	100%																	
2015	578																		
2016	2																		

v) Luxembourg

Filing year	Applications filed	Granted patents	Validated patents	Patents still in force
1997	24 662	11 148	11 071	922
1998	30 854	12 931	12 804	1 110
1999	49 392	22 429	22 184	1 533
2000	71 826	34 651	34 154	2 126
2001	80 824	37 047	36 179	2 716
2002	84 031	37 788	36 378	3 229
2003	91 201	40 105	37 680	4 038
2004	99 201	42 509	38 889	5 147
2005	108 392	44 004	38 762	6 122
2006	115 352	45 803	38 676	7 427
2007	121 398	47 292	37 533	8 980
2008	132 384	51 844	38 434	12 191
2009	136 753	53 470	35 876	15 247
2010	143 623	50 068	28 153	16 578
2011	146 696	42 655	22 184	17 998
2012	147 887	33 499	20 488	19 920
2013	150 557	20 099	15 720	15 708
2014	152 857	7 558	6 720	6 720
2015	130 156	1 444	1 444	1 444
2016	57 720	1	1	1

Percentage of patents still in force at the end of the patent year

Filing year	Validated patent	3	4	5	6	7	8	9	10	11	12	13	14	15	16	17	18	19	20
1997	11 071	100%	98%	92%	79%	63%	50%	40%	33%	28%	24%	19%	16%	14%	12%	11%	9%	9%	8%
1998	12 804	100%	99%	91%	75%	60%	48%	39%	32%	27%	21%	18%	16%	13%	11%	10%	9%	9%	
1999	22 184	100%	95%	80%	62%	48%	37%	29%	24%	19%	15%	12%	10%	9%	8%	7%	7%		
2000	34 154	100%	92%	75%	57%	43%	32%	25%	19%	15%	12%	9%	8%	7%	6%	6%			
2001	36 179	99%	92%	76%	58%	44%	34%	26%	20%	15%	12%	9%	8%	8%	8%				
2002	36 378	99%	89%	73%	57%	45%	34%	26%	20%	14%	11%	10%	9%	9%					
2003	37 680	98%	86%	69%	55%	43%	33%	25%	18%	12%	11%	11%	11%						
2004	38 889	98%	84%	68%	54%	42%	31%	22%	15%	14%	13%	13%							
2005	38 762	97%	83%	66%	52%	38%	27%	18%	17%	16%	16%								
2006	38 676	97%	82%	65%	49%	33%	21%	20%	19%	19%									
2007	37 533	97%	81%	61%	41%	27%	25%	24%	24%										
2008	38 434	97%	79%	56%	35%	32%	32%	32%											
2009	35 876	95%	72%	46%	43%	43%	42%												
2010	28 153	91%	64%	60%	59%	59%													
2011	22 184	89%	82%	81%	81%														
2012	20 488	97%	97%	97%															
2013	15 720	100%	100%																
2014	6 720	100%																	
2015	1 444																		
2016	1																		

w) Latvia

Filing year	Applications filed	Granted patents	Validated patents	Patents still in force
1997				
1998				
1999				
2000				
2001				
2002				
2003				
2004				
2005	55 341	22 603	1 808	1 500
2006	115 079	45 550	3 354	2 773
2007	121 505	47 416	3 644	3 213
2008	132 311	51 776	4 255	3 927
2009	136 926	53 647	4 946	4 772
2010	145 115	51 561	5 063	4 917
2011	149 875	45 833	5 294	5 243
2012	151 319	36 930	4 360	4 347
2013	152 782	22 323	2 659	2 656
2014	154 326	9 027	1 604	1 604
2015	130 422	1 711	286	286
2016	57 721	2	1	1

Percentage of patents still in force at the end of the patent year

Filing year	Validated patent	3	4	5	6	7	8	9	10	11	12	13	14	15	16	17	18	19	20
1997																			
1998																			
1999																			
2000																			
2001																			
2002																			
2003																			
2004																			
2005	1 808	100%	100%	99%	97%	95%	92%	90%	87%	84%	83%								
2006	3 354	100%	99%	99%	97%	94%	92%	89%	85%	83%									
2007	3 644	100%	100%	99%	97%	95%	92%	90%	88%										
2008	4 255	100%	100%	99%	98%	96%	94%	92%											
2009	4 947	100%	100%	99%	99%	98%	96%												
2010	5 064	100%	100%	99%	98%	97%													
2011	5 294	100%	100%	99%	99%														
2012	4 361	100%	100%	100%															
2013	2 660	100%	100%																
2014	1 606	100%																	
2015	286																		
2016	2																		

x) Monaco

Filing year	Applications filed	Granted patents	Validated patents	Patents still in force
1997	19 248	7 856	7 744	501
1998	25 398	9 629	9 422	586
1999	46 413	20 615	20 170	870
2000	71 271	34 195	33 316	1 261
2001	80 170	36 459	34 928	1 590
2002	83 337	37 136	34 561	1 830
2003	90 313	39 255	35 019	2 392
2004	98 165	41 513	35 229	3 079
2005	107 181	42 823	33 925	3 646
2006	114 010	44 477	32 489	4 544
2007	120 049	45 956	29 976	5 678
2008	130 315	49 780	27 288	7 351
2009	134 194	50 914	21 913	9 216
2010	142 068	48 514	15 721	10 919
2011	146 068	42 027	13 400	12 647
2012	147 972	33 584	14 742	14 700
2013	150 589	20 131	12 762	12 750
2014	152 851	7 552	5 791	5 791
2015	130 154	1 443	1 435	1 435
2016	57 720	1	1	1

Percentage of patents still in force at the end of the patent year

Filing year	Validated patent	3	4	5	6	7	8	9	10	11	12	13	14	15	16	17	18	19	20
1997	7 744	100%	97%	92%	86%	61%	47%	36%	29%	23%	19%	16%	13%	11%	9%	8%	7%	7%	6%
1998	9 422	100%	99%	95%	73%	58%	45%	35%	28%	22%	18%	14%	12%	9%	8%	7%	7%	6%	
1999	20 170	100%	99%	77%	58%	43%	32%	24%	19%	15%	11%	8%	6%	5%	5%	5%	4%		
2000	33 316	100%	91%	72%	53%	38%	28%	20%	15%	11%	8%	5%	5%	4%	4%	4%			
2001	34 928	99%	91%	74%	55%	39%	29%	21%	15%	10%	6%	5%	5%	5%	5%				
2002	34 561	99%	88%	70%	53%	39%	29%	20%	13%	7%	6%	6%	6%	5%					
2003	35 019	98%	84%	66%	50%	37%	26%	17%	9%	8%	7%	7%	7%						
2004	35 229	97%	82%	63%	49%	34%	22%	12%	10%	9%	9%	9%							
2005	33 925	97%	79%	62%	43%	28%	14%	12%	11%	11%	11%								
2006	32 489	96%	80%	57%	37%	19%	15%	15%	14%	14%									
2007	29 976	96%	75%	49%	25%	20%	19%	19%	19%										
2008	27 288	95%	69%	36%	28%	28%	27%	27%											
2009	21 913	91%	53%	43%	43%	42%	42%												
2010	15 721	83%	71%	70%	70%	69%													
2011	13 400	95%	95%	95%	94%														
2012	14 742	100%	100%	100%															
2013	12 763	100%	100%																
2014	5 793	100%																	
2015	1 435																		
2016	1																		

y) F Y R of Macedonia

Filing year	Applications filed	Granted patents	Validated patents	Patents still in force
1997				
1998				
1999				
2000				
2001				
2002				
2003				
2004				
2005				
2006				
2007				
2008				
2009	136 072	52 797	31 901	31 784
2010	143 570	50 017	38 816	38 686
2011	146 119	42 077	39 293	39 214
2012	147 490	33 102	33 102	33 063
2013	150 445	19 986	19 986	19 981
2014	152 800	7 501	7 501	7 501
2015	130 153	1 443	1 443	1 443
2016	57 720	1	1	1

Percentage of patents still in force at the end of the patent year

Filing year	Validated patent	3	4	5	6	7	8	9	10	11	12	13	14	15	16	17	18	19	20
1997																			
1998																			
1999																			
2000																			
2001																			
2002																			
2003																			
2004																			
2005																			
2006																			
2007																			
2008																			
2009	31 901	100%	100%	100%	100%	100%	100%												
2010	38 817	100%	100%	100%	100%	100%													
2011	39 293	100%	100%	100%	100%														
2012	33 102	100%	100%	100%															
2013	19 986	100%	100%																
2014	7 501	100%																	
2015	1 443																		
2016	1																		

z) Malta

Filing year	Applications filed	Granted patents	Validated patents	Patents still in force
1997				
1998				
1999				
2000				
2001				
2002				
2003				
2004				
2005				
2006				
2007	102 445	39 191	8 238	7 991
2008	130 356	49 823	12 384	12 152
2009	134 209	50 931	15 829	15 692
2010	141 882	48 328	19 103	18 996
2011	145 956	41 914	22 598	22 547
2012	147 876	33 487	24 824	24 799
2013	150 627	20 168	18 176	18 171
2014	152 800	7 501	7 501	7 501
2015	130 154	1 443	1 443	1 443
2016	57 720	1	1	1

Percentage of patents still in force at the end of the patent year

Filing year	Validated patent	3	4	5	6	7	8	9	10	11	12	13	14	15	16	17	18	19	20
1997																			
1998																			
1999																			
2000																			
2001																			
2002																			
2003																			
2004																			
2005																			
2006																			
2007	8 238	100%	100%	100%	99%	99%	98%	97%	97%										
2008	12 384	100%	100%	100%	99%	99%	98%	98%											
2009	15 830	100%	100%	100%	99%	99%	99%												
2010	19 104	100%	100%	100%	100%	99%													
2011	22 598	100%	100%	100%	100%														
2012	24 825	100%	100%	100%															
2013	18 177	100%	100%																
2014	7 501	100%																	
2015	1 443																		
2016	1																		

aa) Netherlands

Filing year	Applications filed	Granted patents	Validated patents	Patents still in force
1997	47 301	25 635	15 594	3 301
1998	54 211	27 690	15 917	4 041
1999	64 515	31 804	16 167	4 953
2000	78 482	38 540	16 987	5 910
2001	86 248	39 922	16 489	6 850
2002	88 258	39 762	15 536	7 230
2003	95 133	41 599	15 250	8 135
2004	102 623	43 511	15 455	9 205
2005	110 993	44 361	15 228	9 997
2006	117 710	45 849	15 496	11 112
2007	122 402	46 585	15 062	11 666
2008	131 155	49 704	15 267	12 715
2009	133 596	50 133	14 752	13 035
2010	141 189	47 635	14 242	13 237
2011	145 491	41 444	12 808	12 325
2012	147 696	33 302	11 064	10 871
2013	150 601	20 141	6 975	6 935
2014	152 859	7 557	2 483	2 483
2015	130 175	1 463	638	638
2016	57 721	1	1	1

Percentage of patents still in force at the end of the patent year

Filing year	Validated patent	3	4	5	6	7	8	9	10	11	12	13	14	15	16	17	18	19	20
1997	15 594	100%	100%	99%	97%	93%	87%	80%	73%	67%	61%	55%	47%	42%	38%	33%	29%	24%	21%
1998	15 917	100%	100%	100%	98%	94%	88%	81%	75%	69%	62%	53%	48%	43%	38%	34%	28%	25%	
1999	16 167	100%	100%	99%	97%	93%	88%	82%	77%	69%	61%	55%	50%	45%	40%	34%	31%		
2000	16 987	100%	100%	99%	97%	93%	88%	82%	75%	67%	61%	55%	50%	45%	38%	35%			
2001	16 490	100%	100%	99%	97%	94%	90%	83%	75%	69%	64%	58%	53%	45%	42%				
2002	15 536	100%	100%	99%	97%	94%	89%	81%	75%	70%	64%	58%	50%	47%					
2003	15 250	100%	100%	99%	97%	93%	87%	82%	77%	72%	65%	57%	53%						
2004	15 455	100%	100%	99%	96%	92%	87%	83%	78%	72%	63%	60%							
2005	15 228	100%	100%	99%	96%	92%	89%	84%	78%	69%	66%								
2006	15 496	100%	100%	98%	96%	93%	89%	84%	76%	72%									
2007	15 062	100%	100%	99%	97%	93%	89%	81%	77%										
2008	15 267	100%	100%	99%	97%	94%	87%	83%											
2009	14 753	100%	100%	99%	97%	92%	88%												
2010	14 243	100%	100%	99%	96%	93%													
2011	12 808	100%	100%	98%	96%														
2012	11 064	100%	100%	98%															
2013	6 976	100%	99%																
2014	2 484	100%																	
2015	638																		
2016	1																		

bb) Norway

Filing year	Applications filed	Granted patents	Validated patents	Patents still in force
1997				
1998				
1999				
2000				
2001				
2002				
2003				
2004				
2005				
2006				
2007				
2008	130 425	49 867	4 702	3 965
2009	134 547	51 259	4 874	4 366
2010	142 798	49 243	4 905	4 565
2011	147 132	43 090	4 549	4 385
2012	148 940	34 550	3 590	3 538
2013	151 599	21 140	2 496	2 488
2014	153 658	8 359	1 203	1 203
2015	130 480	1 769	401	401
2016	57 721	2	1	1

Percentage of patents still in force at the end of the patent year

Filing year	Validated patent	3	4	5	6	7	8	9	10	11	12	13	14	15	16	17	18	19	20
1997																			
1998																			
1999																			
2000																			
2001																			
2002																			
2003																			
2004																			
2005																			
2006																			
2007																			
2008	4 702	100%	100%	98%	96%	92%	87%	84%											
2009	4 874	100%	100%	99%	96%	93%	90%												
2010	4 905	100%	100%	98%	95%	93%													
2011	4 549	100%	100%	99%	96%														
2012	3 590	100%	100%	99%															
2013	2 496	100%	100%																
2014	1 203	100%																	
2015	401																		
2016	1																		

cc) Poland

Filing year	Applications filed	Granted patents	Validated patents	Patents still in force
1997				
1998				
1999				
2000				
2001				
2002				
2003				
2004	85 073	35 798	6 847	4 271
2005	107 305	42 820	7 979	5 522
2006	114 147	44 446	8 226	6 092
2007	120 193	45 949	8 192	6 477
2008	130 155	49 523	8 333	7 083
2009	133 915	50 611	8 325	7 516
2010	141 724	48 168	7 714	7 250
2011	145 969	41 930	6 971	6 808
2012	148 074	33 684	5 903	5 859
2013	150 835	20 376	4 301	4 298
2014	152 998	7 698	1 796	1 796
2015	130 192	1 481	507	507
2016	57 720	1	1	1

Percentage of patents still in force at the end of the patent year

Filing year	Validated patent	3	4	5	6	7	8	9	10	11	12	13	14	15	16	17	18	19	20
1997																			
1998																			
1999																			
2000																			
2001																			
2002																			
2003																			
2004	6 847	100%	100%	98%	93%	89%	84%	79%	74%	68%	63%	62%							
2005	7 979	100%	100%	98%	94%	90%	86%	81%	75%	70%	69%								
2006	8 226	100%	100%	98%	94%	91%	86%	80%	75%	74%									
2007	8 192	100%	99%	98%	95%	91%	85%	80%	79%										
2008	8 333	100%	100%	98%	95%	91%	86%	85%											
2009	8 326	100%	100%	98%	95%	91%	90%												
2010	7 715	100%	100%	98%	95%	94%													
2011	6 971	100%	100%	98%	98%														
2012	5 904	100%	100%	99%															
2013	4 301	100%	100%																
2014	1 798	100%																	
2015	507																		
2016	1																		

dd) Portugal

Filing year	Applications filed	Granted patents	Validated patents	Patents still in force
1997	27 980	13 406	6 593	1 191
1998	34 375	15 305	7 427	1 304
1999	51 196	23 648	10 649	1 667
2000	71 246	34 314	14 183	2 036
2001	80 335	36 553	11 554	2 395
2002	83 482	37 183	7 702	2 540
2003	90 377	39 269	5 524	2 785
2004	98 088	41 373	5 266	3 156
2005	107 071	42 663	5 187	3 446
2006	113 784	44 211	5 240	3 789
2007	119 760	45 631	5 000	3 952
2008	129 885	49 323	5 435	4 640
2009	133 752	50 468	5 793	5 321
2010	141 659	48 105	6 051	5 765
2011	145 900	41 859	6 162	6 041
2012	147 924	33 535	4 805	4 767
2013	150 731	20 272	3 075	3 068
2014	153 055	7 755	1 353	1 352
2015	130 196	1 486	431	431
2016	57 720	1	1	1

Percentage of patents still in force at the end of the patent year

Filing year	Validated patent	3	4	5	6	7	8	9	10	11	12	13	14	15	16	17	18	19	20
1997	6 593	100%	100%	99%	97%	94%	73%	59%	54%	50%	46%	41%	35%	32%	29%	25%	22%	20%	18%
1998	7 427	100%	100%	99%	98%	74%	59%	54%	50%	46%	41%	35%	31%	28%	25%	22%	20%	18%	
1999	10 649	100%	100%	99%	69%	49%	45%	42%	39%	35%	31%	28%	25%	22%	20%	18%	16%		
2000	14 183	100%	100%	67%	41%	40%	37%	34%	31%	27%	25%	22%	20%	18%	16%	14%			
2001	11 554	100%	77%	50%	49%	47%	45%	41%	37%	34%	31%	28%	25%	23%	21%				
2002	7 702	93%	70%	70%	69%	66%	62%	57%	52%	48%	44%	39%	36%	33%					
2003	5 524	95%	95%	94%	92%	87%	81%	77%	71%	65%	60%	55%	50%						
2004	5 266	100%	100%	99%	96%	91%	86%	80%	75%	69%	64%	60%							
2005	5 187	100%	100%	99%	95%	92%	87%	82%	76%	71%	66%								
2006	5 240	100%	100%	98%	96%	92%	87%	83%	78%	72%									
2007	5 000	100%	100%	99%	97%	93%	88%	84%	79%										
2008	5 435	100%	100%	99%	97%	94%	90%	85%											
2009	5 794	100%	100%	99%	97%	95%	92%												
2010	6 051	100%	100%	99%	98%	95%													
2011	6 162	100%	100%	99%	98%														
2012	4 805	100%	100%	99%															
2013	3 075	100%	100%																
2014	1 353	100%																	
2015	431																		
2016	1																		

ee) Romania

Filing year	Applications filed	Granted patents	Validated patents	Patents still in force
1997				
1998				
1999				
2000				
2001				
2002				
2003	76 527	33 425	3 617	2 066
2004	98 217	41 568	4 593	2 765
2005	107 219	42 855	4 622	2 955
2006	114 055	44 512	5 122	3 475
2007	120 190	46 089	5 499	3 856
2008	130 493	49 948	6 417	4 570
2009	134 569	51 287	7 434	5 405
2010	142 419	48 865	8 059	5 619
2011	146 571	42 529	8 733	6 008
2012	148 572	34 183	8 769	6 110
2013	151 121	20 662	6 564	5 623
2014	153 112	7 813	2 906	2 846
2015	130 162	1 451	938	938
2016	57 720	1	1	1

Percentage of patents still in force at the end of the patent year

Filing year	Validated patent	3	4	5	6	7	8	9	10	11	12	13	14	15	16	17	18	19	20
1997																			
1998																			
1999																			
2000																			
2001																			
2002																			
2003	3 617	100%	99%	98%	96%	92%	87%	82%	78%	74%	69%	60%	57%						
2004	4 593	100%	99%	98%	94%	91%	87%	83%	79%	74%	62%	60%							
2005	4 622	100%	99%	97%	94%	91%	87%	84%	80%	66%	64%								
2006	5 122	100%	99%	98%	96%	93%	90%	86%	70%	68%									
2007	5 499	100%	99%	98%	97%	94%	91%	72%	70%										
2008	6 417	100%	100%	99%	97%	95%	73%	71%											
2009	7 435	100%	100%	99%	98%	74%	73%												
2010	8 060	100%	100%	99%	71%	70%													
2011	8 733	100%	100%	69%	69%														
2012	8 770	100%	70%	70%															
2013	6 565	86%	86%																
2014	2 908	98%																	
2015	938																		
2016	1																		

ff) Serbia

Filing year	Applications filed	Granted patents	Validated patents	Patents still in force
1997				
1998				
1999				
2000				
2001				
2002				
2003				
2004				
2005				
2006				
2007				
2008				
2009				
2010	40 312	14 010	1 915	1 894
2011	149 170	45 131	4 597	4 550
2012	151 217	36 829	4 235	4 212
2013	153 003	22 545	2 865	2 862
2014	154 342	9 043	1 621	1 621
2015	130 803	2 092	666	666
2016	57 721	2	1	1

Percentage of patents still in force at the end of the patent year

Filing year	Validated patent	3	4	5	6	7	8	9	10	11	12	13	14	15	16	17	18	19	20
1997																			
1998																			
1999																			
2000																			
2001																			
2002																			
2003																			
2004																			
2005																			
2006																			
2007																			
2008																			
2009																			
2010	1 915	100%	100%	100%	100%	99%													
2011	4 597	100%	100%	100%	99%														
2012	4 236	100%	100%	99%															
2013	2 866	100%	100%																
2014	1 623	100%																	
2015	666																		
2016	2																		

gg) Sweden

Filing year	Applications filed	Granted patents	Validated patents	Patents still in force
1997	41 108	22 214	12 103	2 323
1998	47 830	24 219	11 701	2 855
1999	60 274	29 632	12 185	3 592
2000	75 148	37 092	12 597	4 020
2001	84 407	39 232	12 260	4 688
2002	86 654	39 311	11 421	4 956
2003	93 243	41 111	11 024	5 425
2004	100 524	42 936	10 727	5 871
2005	109 269	44 001	10 611	6 458
2006	115 753	45 391	10 187	6 895
2007	121 086	46 445	9 471	6 952
2008	130 552	49 800	9 427	7 494
2009	133 974	50 635	8 874	7 639
2010	141 971	48 416	8 010	7 266
2011	146 309	42 266	7 000	6 613
2012	148 398	34 008	5 547	5 404
2013	151 106	20 647	3 554	3 526
2014	153 162	7 861	1 313	1 311
2015	130 366	1 655	404	402
2016	57 721	2	1	1

Percentage of patents still in force at the end of the patent year

Filing year	Validated patent	3	4	5	6	7	8	9	10	11	12	13	14	15	16	17	18	19	20
1997	12 103	99%	97%	96%	92%	87%	80%	73%	67%	62%	56%	48%	43%	38%	34%	29%	26%	22%	19%
1998	11 701	100%	100%	99%	95%	90%	84%	78%	72%	66%	57%	51%	46%	40%	35%	31%	27%	24%	
1999	12 185	100%	100%	98%	94%	89%	84%	78%	72%	64%	57%	51%	46%	41%	37%	32%	29%		
2000	12 597	100%	100%	98%	95%	90%	85%	78%	70%	62%	56%	51%	45%	39%	35%	32%			
2001	12 260	100%	100%	98%	95%	92%	86%	78%	70%	64%	59%	53%	47%	42%	38%				
2002	11 421	100%	100%	98%	96%	91%	83%	77%	70%	65%	59%	53%	47%	43%					
2003	11 024	100%	100%	98%	95%	89%	83%	77%	71%	65%	59%	53%	49%						
2004	10 727	100%	99%	98%	93%	88%	82%	77%	70%	65%	59%	55%							
2005	10 611	100%	99%	97%	94%	90%	84%	78%	72%	66%	61%								
2006	10 187	100%	99%	97%	95%	90%	85%	79%	73%	68%									
2007	9 471	100%	99%	98%	95%	90%	84%	78%	73%										
2008	9 427	100%	100%	98%	94%	89%	84%	79%											
2009	8 875	100%	99%	97%	94%	90%	86%												
2010	8 011	100%	99%	98%	95%	91%													
2011	7 000	100%	99%	97%	94%														
2012	5 548	100%	99%	97%															
2013	3 555	100%	99%																
2014	1 315	100%																	
2015	404																		
2016	2																		

hh) Slovenia

Filing year	Applications filed	Granted patents	Validated patents	Patents still in force
1997				
1998				
1999				
2000				
2001				
2002	7 843	3 529	444	304
2003	90 149	39 216	3 737	2 299
2004	98 142	41 499	4 097	2 878
2005	107 205	42 843	4 180	3 194
2006	114 107	44 559	4 797	3 989
2007	120 247	46 145	5 420	4 781
2008	130 639	50 091	6 521	6 042
2009	134 732	51 450	7 771	7 485
2010	142 808	49 254	8 930	8 713
2011	147 005	42 963	10 020	9 909
2012	148 808	34 419	10 667	10 631
2013	151 074	20 615	10 078	10 070
2014	152 986	7 687	4 838	4 838
2015	130 159	1 448	1 344	1 344
2016	57 720	1	1	1

Percentage of patents still in force at the end of the patent year

Filing year	Validated patent	3	4	5	6	7	8	9	10	11	12	13	14	15	16	17	18	19	20
1997																			
1998																			
1999																			
2000																			
2001																			
2002	444	100%	100%	99%	97%	94%	88%	86%	82%	79%	75%	71%	68%	68%					
2003	3 737	100%	99%	98%	96%	91%	86%	82%	77%	73%	69%	65%	62%						
2004	4 097	100%	100%	98%	95%	92%	88%	84%	80%	76%	72%	70%							
2005	4 180	100%	100%	98%	96%	93%	89%	86%	82%	78%	76%								
2006	4 797	100%	99%	99%	97%	94%	91%	88%	85%	83%									
2007	5 420	100%	100%	99%	97%	95%	92%	90%	88%										
2008	6 521	100%	100%	99%	98%	96%	94%	93%											
2009	7 772	100%	100%	99%	98%	97%	96%												
2010	8 931	100%	100%	99%	98%	98%													
2011	10 020	100%	100%	99%	99%														
2012	10 668	100%	100%	100%															
2013	10 079	100%	100%																
2014	4 840	100%																	
2015	1 344																		
2016	1																		

ii) Slovakia

Filing year	Applications filed	Granted patents	Validated patents	Patents still in force
1997				
1998				
1999				
2000				
2001				
2002	42 630	19 068	2 092	1 194
2003	90 394	39 402	3 939	2 300
2004	98 337	41 668	4 239	2 814
2005	107 338	42 968	4 098	2 988
2006	114 294	44 746	4 468	3 480
2007	120 513	46 402	4 664	3 968
2008	130 751	50 207	5 275	4 733
2009	135 131	51 848	6 175	5 852
2010	143 216	49 662	6 471	6 241
2011	147 342	43 300	6 714	6 633
2012	149 130	34 741	6 624	6 580
2013	151 209	20 750	5 694	5 687
2014	153 101	7 802	2 849	2 849
2015	130 162	1 452	940	940
2016	57 720	1	1	1

Percentage of patents still in force at the end of the patent year

Filing year	Validated patent	3	4	5	6	7	8	9	10	11	12	13	14	15	16	17	18	19	20
1997																			
1998																			
1999																			
2000																			
2001																			
2002	2 092	100%	100%	98%	96%	92%	85%	81%	76%	70%	66%	62%	58%	57%					
2003	3 939	100%	99%	98%	95%	90%	85%	80%	76%	71%	66%	62%	58%						
2004	4 239	100%	99%	98%	94%	90%	86%	81%	77%	73%	68%	66%							
2005	4 098	100%	99%	97%	94%	91%	87%	83%	79%	75%	73%								
2006	4 468	100%	99%	98%	95%	92%	89%	85%	80%	78%									
2007	4 664	100%	99%	98%	97%	94%	90%	87%	85%										
2008	5 275	100%	100%	99%	97%	95%	92%	90%											
2009	6 176	100%	100%	99%	98%	96%	95%												
2010	6 472	100%	100%	99%	98%	96%													
2011	6 714	100%	100%	99%	99%														
2012	6 625	100%	100%	99%															
2013	5 695	100%	100%																
2014	2 851	100%																	
2015	940																		
2016	1																		

jj) San Marino

Filing year	Applications filed	Granted patents	Validated patents	Patents still in force
1997				
1998				
1999				
2000				
2001				
2002				
2003				
2004				
2005				
2006				
2007				
2008				
2009	73 245	29 617	5 559	5 507
2010	148 647	55 094	13 343	13 238
2011	150 128	46 086	11 712	11 646
2012	149 646	35 257	10 393	10 356
2013	150 502	20 043	8 684	8 678
2014	152 857	7 558	2 854	2 854
2015	130 163	1 452	919	919
2016	57 720	1	1	1

Percentage of patents still in force at the end of the patent year

Filing year	Validated patent	3	4	5	6	7	8	9	10	11	12	13	14	15	16	17	18	19	20
1997																			
1998																			
1999																			
2000																			
2001																			
2002																			
2003																			
2004																			
2005																			
2006																			
2007																			
2008																			
2009	5 559	100%	100%	100%	99%	99%	99%												
2010	13 344	100%	100%	100%	100%	99%													
2011	11 712	100%	100%	100%	99%														
2012	10 394	100%	100%	100%															
2013	8 684	100%	100%																
2014	2 854	100%																	
2015	919																		
2016	1																		

kk) Turkey

Filing year	Applications filed	Granted patents	Validated patents	Patents still in force
1997				
1998				
1999				
2000	13 171	6 326	1 209	822
2001	80 791	37 007	6 914	4 564
2002	83 929	37 629	7 731	5 531
2003	90 880	39 765	8 768	6 862
2004	98 854	42 065	10 317	8 570
2005	107 820	43 367	11 858	10 542
2006	114 762	45 131	14 000	12 946
2007	120 850	46 682	16 737	15 986
2008	130 977	50 398	20 889	20 419
2009	134 848	51 557	25 111	24 811
2010	142 547	48 992	29 261	29 114
2011	146 249	42 207	32 937	32 870
2012	147 815	33 425	31 062	31 030
2013	150 449	19 992	19 980	19 975
2014	152 803	7 503	7 503	7 503
2015	130 154	1 444	1 444	1 444
2016	57 720	1	1	1

Percentage of patents still in force at the end of the patent year

Filing year	Validated patent	3	4	5	6	7	8	9	10	11	12	13	14	15	16	17	18	19	20
1997																			
1998																			
1999																			
2000	1 209	100%	100%	100%	99%	99%	99%	93%	85%	82%	75%	71%	68%	68%	68%	68%			
2001	6 915	100%	100%	100%	100%	99%	95%	87%	82%	76%	71%	67%	67%	66%	66%				
2002	7 731	100%	100%	100%	100%	97%	91%	86%	81%	76%	72%	72%	72%	72%					
2003	8 768	100%	100%	100%	98%	94%	91%	87%	83%	79%	79%	79%	78%						
2004	10 317	100%	100%	99%	96%	94%	91%	87%	84%	84%	83%	83%							
2005	11 858	100%	100%	99%	97%	95%	92%	90%	89%	89%	89%								
2006	14 000	100%	100%	99%	98%	95%	93%	93%	93%	92%									
2007	16 737	100%	100%	99%	98%	96%	96%	96%	96%	96%									
2008	20 889	100%	100%	99%	98%	98%	98%	98%											
2009	25 112	100%	100%	99%	99%	99%	99%												
2010	29 262	100%	100%	100%	100%	99%													
2011	32 937	100%	100%	100%	100%														
2012	31 063	100%	100%	100%															
2013	19 980	100%	100%																
2014	7 503	100%																	
2015	1 444																		
2016	1																		

ANNEX 2 NATIONAL STATISTICS

A. NATIONAL PATENT APPLICATIONS

a) Filing route and growth over 2015 (not adjusted for missing data)

Country		National	PCT national phase	Total	Resident	Non Resident
Albania	AL	23 35%	2 0,0%	25 31,6%	21 50%	4 -20,0%
Austria	AT	2 480 -7,0%	514 -2,7%	2 994 -6,3%	2 574 -7,1%	420 -0,7%
Belgium ⁽¹⁾	BE	1 173 6,9%	-	1 173 6,9%	1 054 11,1%	119 -20%
Bulgaria	BG	-	-	-	-	-
Switzerland/Liechtenstein	CH/LI	1 708 -7,5%	63 -23,2%	1 771 -8,2%	1 462 -1,4%	309 -30,7%
Cyprus ⁽¹⁾	CY	4 -42,9%	-	4 -42,9%	3 -50%	1 0%
Czech Republic	CZ	806 -13,3%	33 43,5%	839 -12,0%	792 -10,0%	47 -35,6%
Germany	DE	61 573 1,9%	6 325 -1,8%	67 898 1,5%	48 481 2,3%	19 417 -0,5%
Denmark	DK	1 744 5,7%	106 29,3%	1 850 6,8%	1 552 6,2%	298 10,4%
Estonia	EE	30 -11,8%	0 -100%	30 -16,7%	29 -3,3%	1 -83,3%
Spain	ES	2 849 -1,1%	73 -69,2%	2 922 -6,3%	2 745 -5,3%	177 -19,9%
Finland	FI	1 343 -2,2%	25 -41,9%	1 368 -3,4%	1 260 -2,2%	108 -15,0%
France ⁽¹⁾	FR	16 218 -0,5%	-	16 218 -0,5%	14 206 -0,7%	2 012 0,9%
United Kingdom	GB	19 699 -4,6%	2 543 5,0%	22 242 -3,6%	13 875 -6,7%	8 367 2,0%
Greece ⁽¹⁾	GR	646 12,7%	-	646 12,7%	605 10,0%	41 78,3%
Croatia	HR	182 0,0%	6 50,0%	188 1,1%	175	13 -23,5%
Hungary	HU	649 4,2%	16 60%	665 5,1%	616 8,3%	49 -23,4%
Ireland ⁽¹⁾	IE	287 -34,8%	-	287 -34,8%	202 -19,2%	85 -55,3%
Iceland	IS	35 -16,7%	3 -25,0%	38 -17,4%	34 -12,8%	4 -42,9%
Italy ⁽¹⁾	IT	10 794 11,4%	-	10 794 11,4%	8 848	973
Lithuania	LT	153 -	0 -	153 28,6%	95 -5,9%	58 222%
Luxembourg	LU	-	-	703 208,3%	423 230,5%	280 180%
Latvia	LV	113 -17,5%	0	113 -17,5%	95 -30,1%	18 1700%
Monaco ⁽¹⁾	MC	14 133%	-	14 133%	7 40,0%	7 600,0%
FYRO Macedonia	MK	936 30,4%	7 600,0%	943 31,2%	49 58,1%	894 29,9%
Malta ⁽¹⁾	MT	4 -63,6%	-	4 -63,6%	4 -55,6%	0 -100%
Netherlands ⁽¹⁾	NL	2 604 4,4%	-	2 604 4,4%	2 280 3,3%	324 12,9%
Norway	NO	1 315 5,3%	745 36,2%	2 060 14,7%	1 227 5,5%	833 31,6%
Poland	PL	4 351 -8,9%	45 7,1%	4 396 -8,7%	4 261 -8,9%	135 -2,9%
Portugal	PT	929 -20,1%	10 -37,5%	939 -20,3%	812 -23,0%	127 3,3%
Romania*	RO	-	-	-	-	-
Serbia	RS	207 10,7%	6 50,0%	213 11,5%	192 7,9%	21 61,5%
Sweden	SE	2 312 -1,8%	73 0,0%	2 385 -1,8%	2 030 -0,4%	355 -8,7%
Slovenia	SI	315 -	0	315 1,6%	299 1,0%	16 14,3%
Slovakia	SK	227 -7,7%	6 -40,0%	233 -9,0%	220 -3,5%	13 -53,6%
San Marino	SM	22 -18,5%	0 -100%	22 -21,4%	6 100,0%	16 -36,0%
Turkey	TR	6 560 18,2%	299 3,1%	6 859 17,5%	6 244 16,8%	615 24,5%
EPC States		142 305 1,2%	10 900 0,3%	153 908 1,1%	116 778 8,3%	36 157 4,2%
EPC States estimates				155 263 1,3%		

(1) No PCT national phase entry

* no data provided

Due to missing data, figures do not necessarily add up.

c) First filings

First filings as a % of national domestic applications

Albania	AL	100.0%
Austria	AT	90.6%
Belgium	BE	86.1%
Bulgaria*	BG	
Switzerland/Liechtenstein	CH/LI	93.4%
Cyprus	CY	100.0%
Czech Republic	CZ	99.9%
Germany	DE	91.9%
Denmark	DK	97.0%
Estonia	EE	93.1%
Spain	ES	99.6%
Finland	FI	96.6%
France	FR	97.9%
United Kingdom	GB	88.6%
Greece	GR	100.0%
Croatia	HR	99.4%
Hungary	HU	94.2%
Ireland	IE	79.2%
Iceland	IS	100.0%
Italy	IT	97.0%
Lithuania	LT	100.0%
Luxembourg*	LU	
Latvia	LV	96.8%
Monaco	MC	100.0%
F Y R of Macedonia	MK	100.0%
Malta	MT	100.0%
Netherlands	NL	85.9%
Norway	NO	94.4%
Poland	PL	99.9%
Portugal	PT	99.6%
Romania*	RO	
Serbia	RS	99.0%
Sweden	SE	97.3%
Slovenia	SI	100.0%
Slovakia	SK	100.0%
San Marino*	SM	
Turkey	TR	96.1%
EPC states		93.6%

* no data provided

In addition 61% of the national applications filed by residents from other EPC states were first filings.

B. GRANT PROCEDURE

Country		Granted patents			Applications			Total
		Residents	Non residents	Total	Withdrawn	Deemed withdrawn	Refused	
Albania	AL	11	5	16	0	0	1	17
Austria	AT	984	151	1 135	118		827	2 080
Belgium	BE	1 373	247	1 620	89	0	108	1 817
Bulgaria*	BG							
Switzerland / Liechtenstein	CH/LI	416	201	617	189		1 190	1 996
Cyprus	CY	0	0	0	0	1	3	4
Czech Republic	CZ	637	144	781	100	340	345	1 566
Germany	DE	10 792	4 860	15 652	4 145	27 455	8 539	55 791
Denmark	DK	236	173	409	126	1 244	1	1 780
Estonia	EE	19	8	27	7	18	2	54
Spain	ES	2 137	171	2 308	140	561	481	3 490
Finland	FI	710	105	815	56	851	13	1 735
France	FR	10 623	1 751	12 374	225	0		12 599
United Kingdom	GB	2 897	2 705	5 602		2 657	12 303	20 562
Greece	GR	264	7	271	48	7	1	327
Croatia	HR	11	24	35	0	140	30	205
Hungary	HU	77	194	271	85	261	61	678
Ireland	IE	77	87	164	58	104	56	382
Iceland	IS	2	20	22	3	0	0	25
Italy	IT	5 682	747	6 429	423		3 129	9 981
Lithuania	LT	86	17	103	5	17	1	126
Luxembourg*	LU							
Latvia	LV	66	2	68	4	1	6	79
Monaco	MC	7	2	9	0	0	0	9
F Y R of Macedonia	MK	16	662	678			2	680
Malta	MT	6	0	6	0	0	0	6
Netherlands	NL	1 662	292	1 954	367	402	5	2 728
Norway	NO	887	1 640	2 527	100	1 947	20	4 594
Poland	PL	3 370	178	3 548	196		1 250	4 994
Portugal	PT	87	63	150	15		182	347
Romania*	RO							
Serbia	RS	50	18	68	6	78	62	214
Sweden	SE	736	130	866	144	1 178	50	2 238
Slovenia	SI	246	20	266	24	86	0	376
Slovakia	SK	81	41	122	12	112	68	314
San Marino*	SM							
Turkey	TR	1 611	155	1 766	33	130	38	1 967
Total		45 859	14 820	60 679	6 718	37 590	28 774	133 761
Total estimates				60 720				133 969

* no data provided

C. WORKING AGREEMENTS EPO-NPO ON SEARCH

a) Ex-IIIB states

As per CA/37/08 rev.1, the table below shows the latest figures on the numbers and proportions of national applications for which the EPO has conducted search on behalf of the country (FR, NL, BE, LU, TR), which were subsequently filed as European applications or PCT international applications.

Applications are counted in the year of the subsequent applications. Counts for 2016 are still provisional.

Year	Searched by the EPO	Not extended / Remained national	Extended as			
			EP		PCT	
2015	16 909	7 218 43%	2 531	15%	7 160	42%
2016	14 328	6 086 43%	2 157	15%	6 085	42%

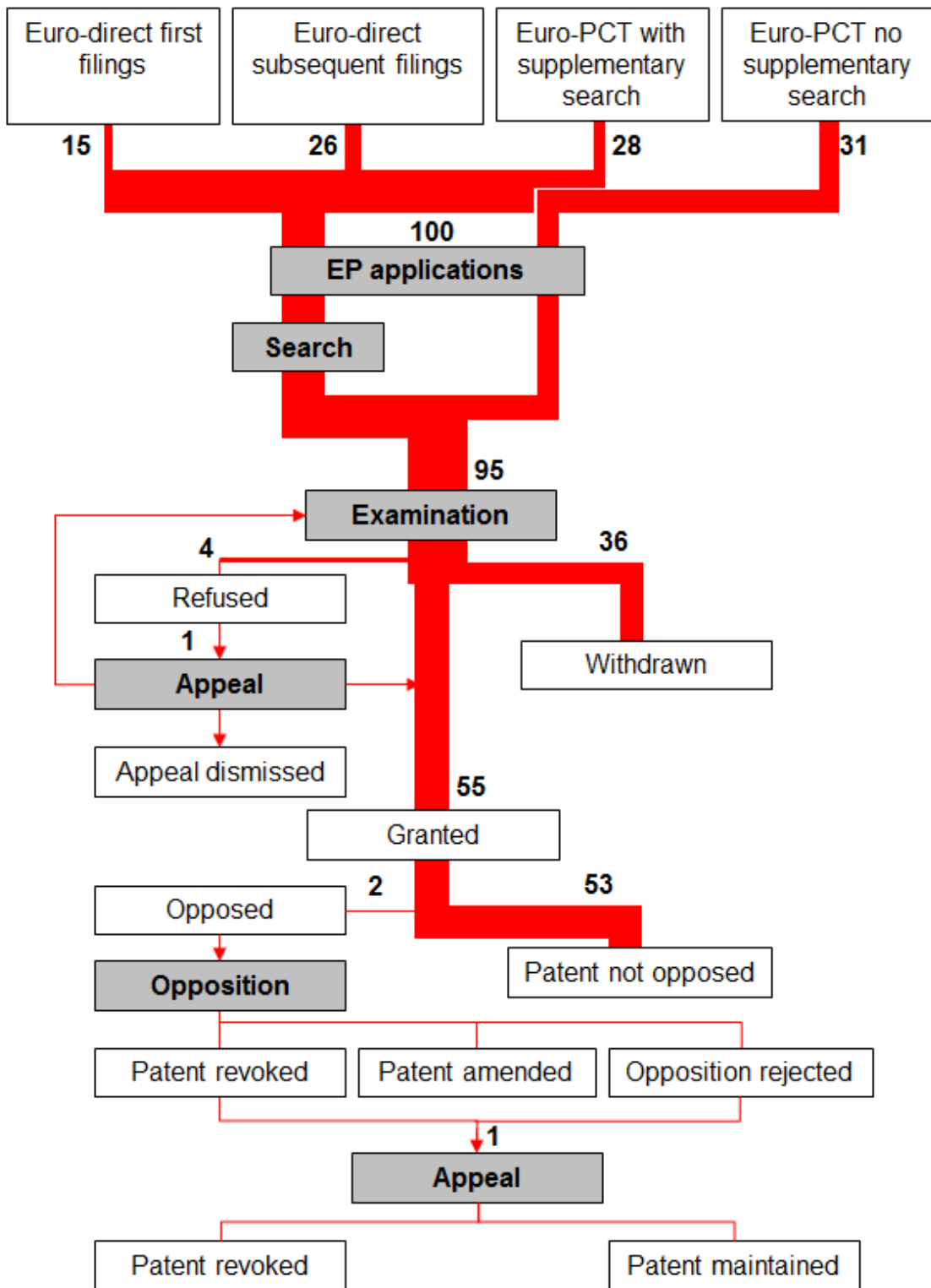
b) Other states

Similar working agreements have been signed with other EPC member states (CY, GR, IT, LT, MT, SM). The agreements with Lithuania and San Marino entered into force on 1 January 2014.

Applications are counted in the year of the subsequent applications. Counts for 2016 are still provisional.

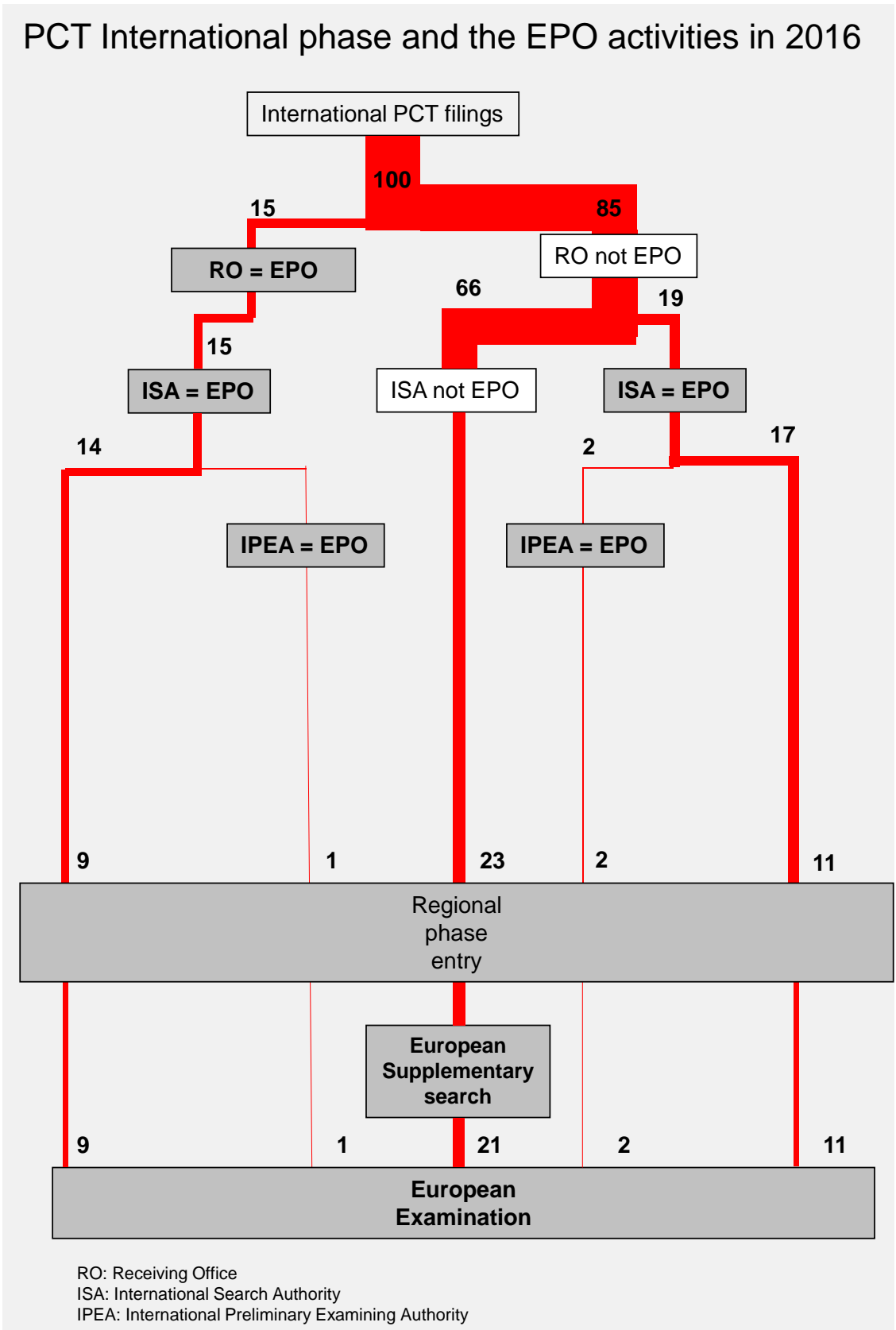
Year	Searched by the EPO	Not extended / Remained national	Extended as			
			EP		PCT	
2015	8 230	4 316 53%	1 336	16%	2 578	31%
2016	7 589	3 918 52%	1 213	16%	2 458	32%

European grant procedure in 2016



The figures illustrate the 2016 values of the parameters.

ANNEX 4 THE PCT INTERNATIONAL PHASE AND THE EPO IN 2016



The figures illustrate the 2016 values of the parameters.

ANNEX 5 GLOSSARY

Amended form: patent application (description, claims or drawings) has been amended before grant (Article 123 EPC) or during the opposition proceedings (Article 101 EPC).

Appeal: *ex parte* appeal, *inter-partes* appeal or a PCT protest as well as a legal appeal, a disciplinary appeal (Article 106 EPC).

Country of origin: country of residence of the first named applicant.

Direct European route (application): patent application filed under Article 75 EPC (also Euro-direct application).

Designation: indication of the contracting state(s) in which the protection for the invention is desired (Article 79 EPC).

EPC: European Patent Convention (38 contracting states as at 31 December 2016) enables the patent applicant, by means of a single procedure, to obtain a patent in some or all of the contracting states.

Euro-PCT route: a way to obtain a European patent by designating the EPO in a PCT application (Article 11 PCT).

Euro-PCT application - international phase (or Euro-PCT application or PCT international): a PCT application designating the EPO (Article 153(2) EPC).

Euro-PCT application - regional phase (or PCT regional): PCT application entering the European (or regional) phase once the applicant has fulfilled the conditions under Article 22 or 39 PCT, Article 153(3) and (4) and Rule 159 EPC.

Euro-PCT search (or PCT Chapter I): search carried out by the EPO acting as International Searching Authority for a Euro-PCT application in the international phase (Article 16 PCT).

European examination: on written request the EPO shall examine a European patent application (Article 94 EPC).

European first filings: a European application filed without claiming the priority of a previous application.

European search: search carried out by the EPO on a direct European application or a Euro-PCT application having entered the European phase (Article 92 EPC).

Ex parte case: appeal filed against a decision taken by an examining division where only one party is involved.

Final action: the last decision taken by the examining division in the examination procedure, either refusing the patent application or indicating the intention to grant a patent (Article 97 EPC).

First action: the first communication sent to the applicant in the examination procedure (Article 94(3), Rule 71(3) EPC).

Inter-partes case: appeal filed against a decision taken by an opposition division, where two or more parties are involved.

International preliminary examination (or PCT Chapter II): non binding examination which can be requested for a PCT application (Article 31 PCT).

International Preliminary Examining Authority (IPEA): (number 22 as of 01.07.2017) office with competence to carry out the international preliminary examination for a PCT application. It may be either a national office (AT, AU, BR, CA, CL, CN, EG, ES, FI, IL, IN, JP, KR, RU, SE, SG, TR, UA, US) or an intergovernmental organisation (EPO, Nordic PI, Visegrad PI) (Article 32 PCT, Article 152 EPC).

International Preliminary Examining Authority (IPEA.E): the EPO is the competent office, see International Preliminary Examining Authority (IPEA).

International search report with written opinion: search report drawn up by a PCT International Searching Authority (Article 18 PCT and Article 153(6) EPC).

International Searching Authority (ISA): (number 22 as of 01.07.2017) office with competence to carry out the international search for a PCT application. It may be either a national office (AT, AU, BR, CA, CL, CN, EG, ES, FI, IL, IN, JP, KR, RU, SE, SG, TR, UA, US) or an intergovernmental organisation (EPO, Nordic PI, Visegrad PI), (Article 16 PCT, Article 152 EPC).

IPC (classification): all patent applications are classified in this internationally recognised classification system, which enables efficient searches to be carried out on all existing patent documents by technical fields.

Limitation-Revocation procedure: allows patentees to have in a centralised procedure either a granted European patent limited or the whole patent retroactively revoked for all contracting states (Article 105a EPC).

National application: filed at a national patent office according to a national procedure.

Opposition: under Articles 99 and 100 EPC, within nine months from the publication of the mention of the grant of a European patent in the European Patent Bulletin, any person may give notice to the EPO of opposition to the European patent granted, invoking lack of patentability, e.g. lack of novelty or inventive step (Articles 52-57 EPC); or lack of sufficiently clear and complete disclosure of invention (Article 83 EPC); or that the granted patent extends beyond the application as filed (Article 123(2) EPC).

Patent granted: when the examining division is of the opinion that the application and the invention to which it relates meet the requirements of the EPC, it shall decide to grant the European patent, Article 97(1) EPC. The grant will be effective from the date on which the European Patent Bulletin mentions the grant (Article 97(3) EPC).

PCT: Patent Cooperation Treaty, which encompassed 152 contracting states on 1 July 2017, enabling a patent applicant, by means of a single procedure, to file a patent application in some or all of the contracting states.

PCT application or filing: international application filed under the PCT (Article 3 PCT).

PCT route: one possible way of filing a patent application within any of the PCT contracting states.

PCT international search: search carried out by the EPO acting as International Searching Authority.

PCT national phase: PCT application entering the national phase once the applicant has fulfilled the conditions under Article 22 or 39 PCT.

Petition for review: request before the Enlarged Board of Appeal for review in specific cases the decision of the Board of Appeal (Article 112a EPC).

Processing time: time elapsing between the moments the examiner starts and completes a given phase of the procedure.

Protest: appeal filed by an applicant in the PCT procedure if he does not agree with the request to pay an additional fee following a decision on lack of unity of invention taken during either the international search or the international preliminary examination (international phase of the PCT) (Articles 17(3)(a) and 34(3)(a), Rules 40.2 and 68.3 PCT, Rule 158 (3) EPC).

Publication: a patent application is published twice during the procedure:

- a European patent application is published as soon as possible after the expiry of a period of eighteen months from the date of filing or, if priority has been claimed, as from the date of priority (Article 93, Rules 67-69 EPC);
- at the same time as the Office publishes the mention of the grant of the European patent, the Office publishes a specification of the European patent containing the description, the claims and any drawings, Articles 98 and 103, Rule 73 EPC. An international patent application, where the Office is designated, is published under Article 21 PCT and is mentioned in the European Patent Bulletin (Article 153(3)-(6) EPC).

Refusal/rejection:

- the examination division will refuse a European patent application if it is of the opinion that such application or the invention to which it relates does not meet the requirements of the EPC, or if the applicant fails to observe a given time limit (Articles 97(2) EPC).
- the Office will reject an opposition or an appeal if it does not fulfil the necessary requirements (Articles 101 and 110 EPC).

Revocation: a patent is revoked after an opposition procedure if the subject-matter of the patent application is not patentable or if it does not disclose the invention in a manner sufficiently clear and complete for it to be carried out by a person skilled in the art or if the subject matter goes beyond the content of the application filed. The patent can also be revoked if the patent applicant fails to meet all formal requirements (Article 101(2) EPC).

Search report: a report of the results of the search drawn up by the search division if the patent application has been accorded a date of filing and is not deemed to be withdrawn (Article 92 EPC).

Supplementary European search: search carried out by the EPO on a Euro-PCT application entering the regional phase for which the ISA was not the EPO (Article 153(7) EPC).

Technical appeal: *ex parte* appeal, *inter partes* appeal or a PCT protest.

Withdrawal: this is the result of non compliance to the EPC rules, if any stage of the procedure the applicant does:

- not pay fees in due time
- not file a request for examination within the given time period (Article 94(2) EPC)
- not reply in due time to any invitation within the examination procedure (Article 94(4) EPC).

A patent application can be withdrawn by the applicant at any stage except where a third party proves to the Office that he has initiated proceedings concerning entitlement and then until such time as the Office resumes the proceedings for grant (Rule 14 EPC).