

CPC Report IMPI-MX

23rd. of march 2021.



ECONOMÍA
SECRETARÍA DE ECONOMÍA



IMPI
INSTITUTO MEXICANO
DE LA PROPIEDAD
INDUSTRIAL



- * Proclass (Professional Classification Software System)
- CPC scheme versión: 2021.02
- We daily use the EPO´s web service OPS for classification orientation purpose.
- For some CN priority application there is no data available at webservice.
- Please add a tag for the first and inventive classification symbol information at OPS..

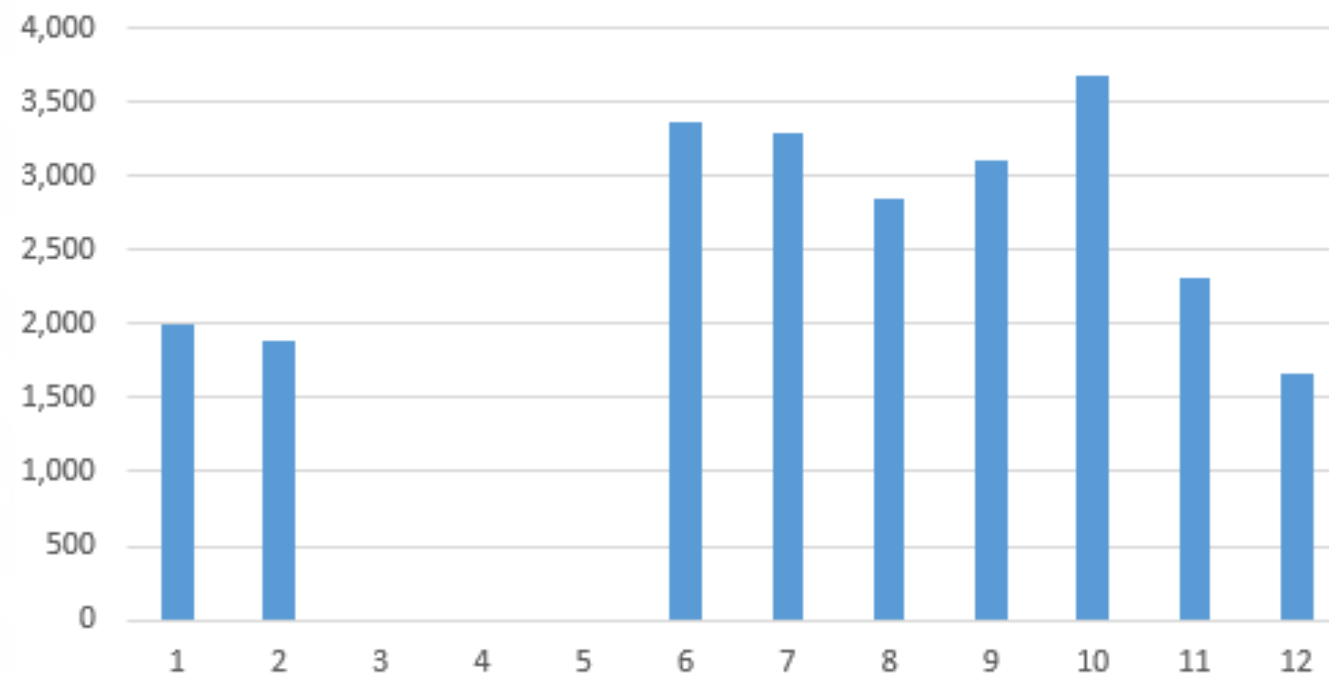
The screenshot displays the ProClass software interface, which is used for patent classification. The interface is divided into several sections:

- Top Bar:** Includes the logos of the Secretariat of Economy (SE) and IMPI, along with the text "ProClass - Clasificación de Patentes y Modelos de Utilidad - Versión 6.0.2020.03.24 - Producción".
- Navigation Tabs:** "Notificaciones", "Expedientes", "Clasificación", "Códigos", "AT".
- Search and Filter Area:** Contains fields for "Especialidad", "Clasificación", "Código", "Fecha", "No. Exp.", and "Inventor".
- Main Data Table:** A table with columns for "Fecha", "Descripción", "Responsable", and "Clasificación". It lists several patent entries with their respective classification codes and descriptions.
- Right Panel:** Shows a detailed view of a specific patent entry, including its "Símbolo" (Symbol) and "Descripción del PI" (Description of the PI).
- Bottom Panel:** Displays a "Clasificación CPC" (CPC Classification) table with columns for "Responsable", "Símbolo", "E.", "N.", "D.", "E.", "Descripción", "C.", "F.", "Versión", "D.", "D.", "Fecha Acción".

Patents and utility models classified during 2020

Month	A1		B1		Sum
	patent	utility model	patent	utility model	
1	1,164	49	771	21	2,005
2	1,366	63	437	18	1,884
3	0	0	0	0	0
4	0	0	0	0	0
5	0	0	0	0	0
6	2,478	61	805	24	3,368
7	1,679	309	1,293	14	3,295
8	2,419	23	401	8	2,851
9	1,935	44	1,095	27	3,101
10	1,948	491	1,244	2	3,685
11	1,232	54	990	27	2,303
12	869	30	749	23	1,671
SUM	15,090	1,124	7,785	164	24,163

Documents classified in CPC and published per month (2020)



*IMPI started publishing, divisional applications (5-7%) and utility models, at A1 gazette.

Inner Reclassification status

- Backlog of application with CPC: 797.
- Total backlog 362K.
- No plan of reclassification of total backlog yet.
- Is still pending the sending of CPC data to EPO.

CPC version	IMPI's document classified since 1st of April of 2016	
	Current version	reclassification
2021.02	114,769	
2021.01		0
2020.08		20
2020.05		70
2020.02		38
2020.01		33
2019.08		42
2019.02		12
2018.08		5
2018.02		211
2017.08		9
2017.05		2
2017.02		2
2016.08		101
2016.05		132
		797

¡Thank you!



ECONOMÍA
SECRETARÍA DE ECONOMÍA



IMPI
INSTITUTO MEXICANO
DE LA PROPIEDAD
INDUSTRIAL

