

# AIPLA

*AMERICAN INTELLECTUAL PROPERTY LAW ASSOCIATION*

## **Global Dossier Active Component - First Step “Proof of Concept”**

### **AIPLA**

**Second Meeting of the Global Dossier Task Force  
SuZhou, China -- January 21-22, 2015**

# USPTO Approach to the Active Component I

- The Active Component of Global Dossier is viewed as **“real-time transfer of documents”** from the dossier of one IP5 Office to the dossier of another IP5 Office, using Global Dossier.
- It could be implemented by **extending the functionality of the Passive (OPD) Component** to allow transfer of selected documents from “DocList” to one or more related cases in “FamilyList.”

# USPTO Approach to the Active Component II

- Focus on ministerial and administrative processes, to reduce costs and improve quality.
- Implement a “technical proof-of-concept” as a building block for further development.
- Identify challenges such as:
  - Security
  - Value of machine translations
  - Business impact
  - Exception processing
  - Actual cost-benefit
  - Navigation and operations

# AIPLA Approach to the “Proof of Concept”

- AIPLA is considering the approach suggested by USPTO in relation to the Active Component.
- In particular, AIPLA has been discussing the possibility of **an initial first step** “proof of concept” addressing the filing of a **request for change of applicant’s address** in some or all of the IP5 Offices.
  - The change of applicant’s address should be accomplished with minimum administrative burden and maximum efficiency and user-friendliness.

# User Requirements

- Accomplish all submissions from a **single web page**
- Bibliographical information should be **auto-populated**
  - **No re-entry** of application or applicant data
- **Forms** should be the same
- **Don't require** entry of **PKI** security keys **for all offices** (one should be enough)
- Submissions through the Global Dossier should **appear immediately in the OPD** for the target office
- **Machine translation** should be available whenever feasible

# Benefits of a Proof of Concept

- This simple case should drive the majority of issues for development of the active component
- Issues that may be enlightened:
  - Accomplish auto-population of data
  - Validate that active component can be implemented as an extension of the passive component
  - Identify security concerns
  - Establish hand-shaking between offices
  - Detect exception processing conditions
  - Determine whether common electronic forms would work
  - Assess issues relating to machine translation

# ASSUMPTIONS for Address Change via Active Component

- Proof of Concept Pilot Applies ONLY to Already Filed Applications in a Family, i.e. applications filed in a **First Office** followed within the Paris Convention year by filings in **Second - Fifth Offices**
- Applicant submits a change of address in the **First Office**, through GD, and requests the **First Office** to transmit the change to one or more of the **Second – Fifth Offices**
- The change of address is processed and **appears in GD/OPD** for all offices requested
- For the convenience of the owner, if a **local counsel** has been retained they are **copied**, so the owner does not have to forward it.

Where  
First Filing  
is in Office  
A; Second  
in Offices  
B-E

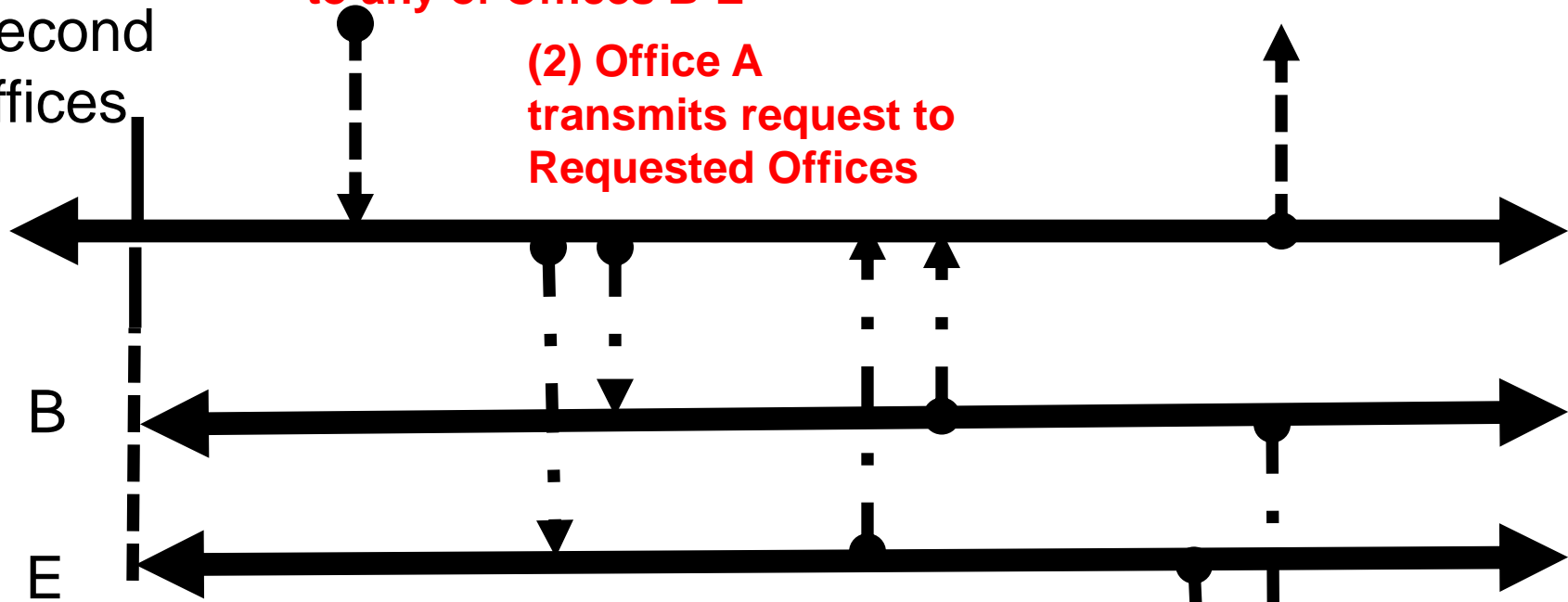
**(1) Change of address  
submitted to Office A,  
with request to transmit  
to any of Offices B-E**

**(2) Office A  
transmits request to  
Requested Offices**

**(5) Requester is  
Notified of Change in  
Requested Offices**

**(3) Requested Offices  
Make Changes;  
changes are reflected  
in GD/OPD**

**(4) Any Local  
Representative is  
notified**



**PILOT EXAMPLE - Active Component Used to Effect Remote Filing of  
Address Change in Offices A-E Using ONE PORTAL**



**Thank you**