



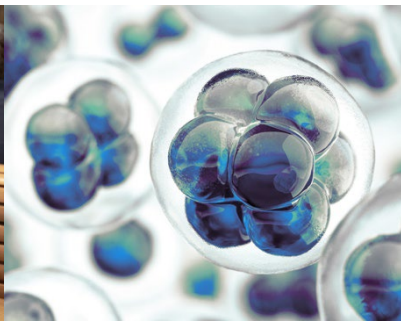
Europäisches  
Patentamt  
European  
Patent Office  
Office européen  
des brevets

# Update on recent achievements

## IP5 Heads and Industry meeting



Carlo Pandolfi



Director, International Co-operation



8 June 2022

Lead office(s): EPO

Project name: Alerting – Global Dossier

Date:  
06-2022



### Project description The Alerting project

The Alerting project aims at providing timely notification to users on file wrapper changes of IP5 family members of an application.

The preferred mechanism by industry is an e-mail alert system covering IP5 patent family Global Dossier changes based on subscription.



### Achievements of the last period

During the last reporting period the EPO has developed a global IP5 Alerting system that can be easily extended to more Offices providing their file wrapper data through a Web Service under the Global Dossier standard.



### Milestones (from project brief)

Milestones (from project brief)	Actual date	Status
Proposal endorsed	Jan. 2017	✓
RSS Alerting EPO-CNIPA	May 2017	✓
E-mail Alerting EPO-CNIPA	June 2018	✓
Global IP5 E-Mail Alerting delivered	June 2022	✓



### Points of attention

The service can now enter its production phase. Based on user feedbacks some small improvements could be brought to the system like offering a selective Alert that would only report the major changes in a file.



### Next steps

It is proposed to close this IP5 EPO led project in view of this delivery as agreed during the last WG2 meeting.

Status: On track Off track Complete

# IP5 Global Alerting: Subscribing to Global Alerts

Patent family: **EP2655388** Family dossiers alerts: RSS Email

Refine search ST36 Espacenet Submit observations Report error Print

Type  Patent family member

Publication No.	Date	Type
	12	A1
	11	
	12	A1
	10	
	11	
	11	
	17	B2

**Subscribe to email alerts**

Dossier(s): AU2011349021  
CA2011001397W  
CA2822493  
CN2011074569W  
CN201180066766  
EP11850773  
IL22705513  
JP2013544980  
JP2015230912  
KR20137019485

[More](#)

A confirmation email will be sent to the email address indicated



**Global Dossier Alert**

Dossier(s): CN201180066766, EP11850773, JP2013544980, KR20137019485, US201514966221

Dear subscriber,

We inform you of the following dossier changes:

- CN201180066766 (publication [CN103339138](#)) [Global Dossier](#)  
Selective glycosidase inhibitors and uses thereof  
18.05.2017 [Notification to Grant Patent Right for Invention\(PCT\) \(ORIGINAL\)](#)  
18.05.2017 [Notification to Grant Patent Right for Invention\(PCT\) \(TRANSLATED\)](#)
- EP11850773 (publication [EP2655388](#)) [Global Dossier](#)  
SELECTIVE GLYCOSIDASE INHIBITORS AND USES THEREOF  
18.05.2017 [Communication about intention to grant a European patent](#)

[Unsubscribe to this e-mail alert](#)

This e-mail alert is subject to the [EPO Online Services legal notices](#).

Please note that e-mails have no legal validity in proceedings under either the EPC or PCT. Read more under [www.epo.org/service-support/contact-us/disclaimer](http://www.epo.org/service-support/contact-us/disclaimer)

Please do not reply to this automatically generated e-mail. Visit [www.epo.org/contact](http://www.epo.org/contact) for ways to contact us if you have any questions on this or any other subject.

European Patent Office  
[www.epo.org](http://www.epo.org)



## Project description

The IP5 NET/AI Roadmap is intended to serve as a blueprint for IP5 Offices' joint endeavours to harness NET/AI capabilities in support of their patent grant processes and provide transparency in their patent practices and predictability of patent prosecution for their users.

The IP5 NET/AI Roadmap identifies four key areas of co-operation:

- Statistics
- Classification
- IT aspects/utilisation of NET/AI
- Legal



## Achievements of the last period

- All IP5 WG experts reviewed the IP5 NET/AI roadmap and started discussing co-operation opportunities
- Project briefs in development:
  - Development of new classification schemes for NET/AI related technologies (WG1)
  - AI assisted CPC classification (WG2)
  - Collection of existing materials on the examination practices of the IP5 Offices on AI-related inventions (PHEP)
  - Comparative Study on Examination Practice on AI-involved Methods Related to Diagnosis (WG3)
- Offices presented an update report at the Industry Consultation Group (ICG) meeting, PMG discussed IP5 Industry involvement
- IP5 agreed to continuously coordinate with Industry AI Task Force via ICG



## Milestones

Milestones	Actual/expected date	Status
IP5 Heads of Office endorse IP5 NET/AI roadmap	June 2021	✓
WGs discuss possible areas of work	Q2 2021 onwards	✓
Coordination with IP5 Industry	Q1 2022	✓
WGs develop concrete joint projects	Q1-Q2 2022	✓



## Points of attention

- IP5 Industry input: machine translation (MT), comparative studies and guidelines relating to standards of AI-related inventions, set of category definitions for AI related inventions, AI assisted classification, forecasting and monitoring



## Next steps

- Seek IP5 Heads' approval of "Collection of existing materials on the examination practices of the IP5 Offices on AI-related inventions" project brief
- Further fine-tuning of draft project briefs in IP5 WGs
- Encourage WGs to consider further co-operation opportunities and develop project briefs accordingly



**Project description**

- Coordinate the evaluation phase in a transparent and open manner including by reporting on the quality and operational results as well as by surveying the participants and user groups
- Assess the potential efficiency gains for the offices and conduct a complete benefits/dis-benefits analysis in order to make recommendations to the IP5 Heads as to the future of the concept. The report should include a recommendation on the fee structure



**Achievements of the last period**

- 2-year operational phase **successfully achieved** on 1 July 2020 with **100 files** received at ISA/US, ISA/KR, ISA/EP (maximum quota reached), 75 at ISA/JP and 93 files at ISA/CN.
- Agreement reached on an extension of the evaluation phase until end June 2023 at the 10<sup>th</sup> IP5 CS&E Pilot Group, endorsed by Deputy Heads
- Survey of pilot participants carried out by the International Bureau on behalf of the IP5 Offices



**Milestones (from project brief)**

**Actual/expected date**

**Status**

Milestones (from project brief)	Actual/expected date	Status
Start of preparatory phase	June 2016	Completed
End of preparatory phase / Start of operational phase	July 2018	Completed
End of operational phase / Start of evaluation phase	July 2020	Completed
End of evaluation phase / Presentation of report to the IP5 Heads of Offices	June 2023	Ongoing



**Points of attention**

A particular challenging point (under JPO lead) concerns the question of the financial scheme for the implementation of the CS&E in the PCT.

Another important point regards the fact that the CS&E would demand IT implementation as manual workarounds proved very resource – consuming.



**Next steps**

- Currently assessing pilot survey results conducted by WIPO in 2021
- October 2022: IP5 Pilot Group meeting to discuss final report, including financial scheme, IT requirements, communication of pilot results
- June 2023: presentation of final report to the IP5 Heads



### Project description

The global assignment project aims to reduce user's burden in recording assignments at individual IP Offices that have different formats and requirements and to increase transparency of IP ownership.

The IP5 Offices will pursue these goals through a phased approach in which the requirements at each Office will be assessed and compared. Based on that assessment and input from Industry, the following will be investigated and considered:

- Development of common forms
- Harmonization of Office requirements, and
- A global assignment repository



### Achievements of the last period

- Chart for comparison of Office requirements developed
- Office requirements have been collected
- Comparison chart being compiled
- IP5 WG2 briefed - February 2022
- Industry Consultation via ICG Meeting – March 2022



Milestones	Actual/expected date	Status
IP5 Heads of Office endorse PHEP Global assignment project	June 2021	
Comparison chart of Office requirements	June 2022	
Report on industry requirements relative to those of Offices, including areas of convergence and challenges	Q3 2022	
Feasibility assessment for next phase	Q3-Q4 2022	



### Points of attention

A feasibility assessment will be conducted at the end of each phase to determine if the project can/should progress and the scope and timeline for the next phase.



### Next steps

- Share completed comparison chart with Offices
- Finalize scope and content of report



## Project description

The project aims to bring greater uniformity of allowable features in drawings, and furthermore, to reduce users' costs and efforts arising from the differences in formal requirements across the respective IP5 regions.

The requirements considered by the IP5 Offices include:

- Paper size and margins
- Image format
- Color / grayscale
- Line drawings
- Size of characters and symbols
- Availability of photos



## Achievements of the last period

- IP5 Offices shared and assessed current Office requirements and operations in terms of drawing
- IP5 Offices identified the "IP5-Safe Format", which outlines common allowable features in drawings
- IP5 Offices established an IP5 brochure showing the common allowable features in drawings (not yet published)



## Milestones (from project brief)

Actual/expected date

Status

IP5 Heads of Office endorse the project	June 2021	✓
IP5 Offices share and assess current Office requirements and operations in terms of drawing	Q3 2021	✓
IP5 Offices identify common allowable features in drawings	Q4 2021	✓
IP5 Offices establish and publish IP5 guidelines, guidance or brochure of the common allowable features in drawings	Q1-Q2 2022	☑
IP5 Offices assess the feasibility for harmonisation	Q3 2022 onwards	☑



## Points of attention

Harmonising some of the allowable features in drawings across IP5 may require renovations of the legal and IT system of some offices, which would generally take time and money.



## Next steps

- IP5 Offices will publish a brochure describing an "IP5-Safe Format" upon approval by the IP5 Heads of Office to complete Phase 1 of this project
- IP5 Offices will initiate Phase 2 of this project by considering the feasibility of harmonisation regarding items for which an "IP5-Safe Format" was not found, and for items requested by IP5 Industry

Status: On track Off track Complete



# Completion of the publication file with support from the EPO



Allowable features in drawings

## Allowable features in drawings

The IP5 Offices have been working closely together to reduce user's burden resulting from the varying formal requirements for drawings in different IP5 Offices. In the realisation of the project "Allowable Features in Drawings", the IP5 Offices have identified common allowable features in drawings (the "IP5 Safe Format").

This JPO-led initiative aims at bringing greater uniformity of allowable features in drawings and, furthermore, at reducing users' differences in formal requirements across the respective IP5 regions. The data below is the result of a first contribution by the IP5 Offices to the IP5 Safe Format of allowable features in drawings among the IP5 Offices.

The different requirements that were considered by the IP5 Offices include:

- Paper size and margins
- Image format
- Color / grayscale
- Line drawings
- Size of characters and symbols
- Availability of photos

[Allowable features in drawings - overview table \(PDF, 591KB\)](#)

[Disclaimer]

While the data in the table aims at highlighting the lowest common denominator ("IP5 Safe Format") of the formal requirements for allowable features in drawings among the IP5 Offices at the time of the data collection, its content may not be considered or construed as legally binding in any way. The IP5 Offices cannot guarantee the completeness, accuracy, or fitness for specific purposes of the data presented.

### Allowable features in drawings

(As of 24 March 2022)

The table below is the result of a first contribution by the IP5 Offices highlighting the IP5-Safe Format of allowable features in drawings among the IP5 Offices:

Overview highlighting the lowest common denominator (IP5-Safe Format)

Paper size and Margins	Image format	Color / grayscale	Line drawings	Size of characters and symbols	Availability of photos
<p><b>A4</b></p> <p>Minimum margins: top margin of 40mm, bottom margin of 20mm, left margin of 25mm, right margin of 25mm.</p> <p>Maximum drawing area: for patent and utility model application: 220mm (L) x 165mm (W), for patent and utility model application: 190mm (L) x 120mm (W)</p>	<p>There is no IP5-Safe image format. Resolution: 300dpi</p>	<p>Black and White</p>	<p>For patent and utility model application: Solid line thickness: approx. 0.4mm, Leader line width: approx. 0.2mm. Dotted and dashed lines width: approx. 0.2mm.</p> <p>Also, the drawings must still allow all details to be distinguished without difficulty with a lines reduction in size to two thirds.</p>	<p>There is no IP5-Safe size of characters and symbols.</p>	<p>Acceptable if it is appropriate</p>

**fiveIPoffices**

European Patent Office // Japan Patent Office // Korean Intellectual Property Office // National Intellectual Property Administration, PRC // United States Patent and Trademark Office

### Allowable features in drawings

Paper size and Margins

**Lowest Common Denominator (IP5-Safe Format): A4** Minimum margins: top margin of 40mm, bottom margin of 20mm, left margin of 25mm, right margin of 25mm  
Maximum drawing area: for patent and utility model application: 220mm (L) x 165mm (W), for patent and utility model application: 190mm (L) x 120mm (W)

Varying formal requirements across the IP5 Offices/WIPO

EPO	JPO	EIPO	CNIPA	USPTO	WIPO (PCT)
<p><b>A4</b></p> <p>Minimum margins: top margin of 20mm, bottom margin of 10mm, left margin of 15mm, right margin of 15mm</p> <p>Maximum drawing area: 282mm (L) x 170mm (W)</p> <p><a href="#">Reference</a></p>	<p><b>A4 size (post-trait)</b></p> <p>No margin setting required. Drawing area: 250mm (L) x 170mm (W)</p> <p><a href="#">Reference</a></p>	<p><b>A4</b></p> <p>Margins: top margin of 40mm, bottom margin of 20mm, left margin of 25mm, right margin of 20mm</p> <p>Drawing area: 220mm (L) x 165mm (W)</p> <p><a href="#">Reference</a></p>	<p><b>A4</b></p> <p>Margins: top margin of 25mm, bottom margin of 10mm, left margin of 25mm, right margin of 15mm</p> <p>Drawing area: the size of the industrial design image or photograph should be no larger than 165mm (W) x 220mm (L); the size of other images should be no larger than 165mm (W) x 240mm (L)</p> <p><a href="#">Reference</a></p>	<p><b>Paper size:</b> All drawing sheets in an application must be the same size. One of the shorter sides of the sheet is regarded as its top. The size of the sheets on which drawings are made must be: US 171.0mm, by 257.0mm; ISO size A4, or US 171.6mm, by 279.5mm.</p> <p>Margins: The sheets must not contain frames around the right (i.e., the staple) side(s), but should have outer target points (i.e., cross-hairs) printed on two opposite margin corners. Each sheet must include a top margin of at least 2.5cm, 1 inch; a left-side margin of at least 2.5cm, 1 inch; a right-side margin of at least 1.5cm, 0.6 inch; and a bottom margin of at least 1.0cm, 0.4 inch; thereby leaving a light no greater than 77.0mm, by 262.0mm, on 21.0cm, by 297.0mm, ISO size A4 drawing sheets, and a light no greater than 17.0cm, by 264.0mm, 16.51cm, by 16.51cm, on 21.0cm, by 279.5mm, 18 1/2 by 11 inch drawing sheets.</p> <p><a href="#">Reference</a></p>	<p><b>A4</b></p> <p>Margins: top margin of 25mm, bottom margin of 10mm, left margin of 25mm, right margin of 15mm</p> <p>Drawing area: 282mm (L) x 170mm (W)</p> <p><a href="#">Reference</a></p>

**fiveIPoffices**

European Patent Office // Japan Patent Office // Korean Intellectual Property Office // National Intellectual Property Administration, PRC // United States Patent and Trademark Office





#### Global Dossier

Access to [file wrappers](#) of IP5 patent family members in a single location.

[Read more about the Global Dossier initiative](#)

#### Common Citation Document

Search patent citations across the members of a patent family in the [IP5 Common Citation Document \(CCD\)](#) database.

#### Key IP5 Statistical Indicators 2021

25 May 2022

The IP5 Offices have published their preliminary statistical indicators for 2021, showing overall trends at the IP5 level.

[Go to 2021 key IP5 statistical indicators](#)



Thank you for your  
attention!